

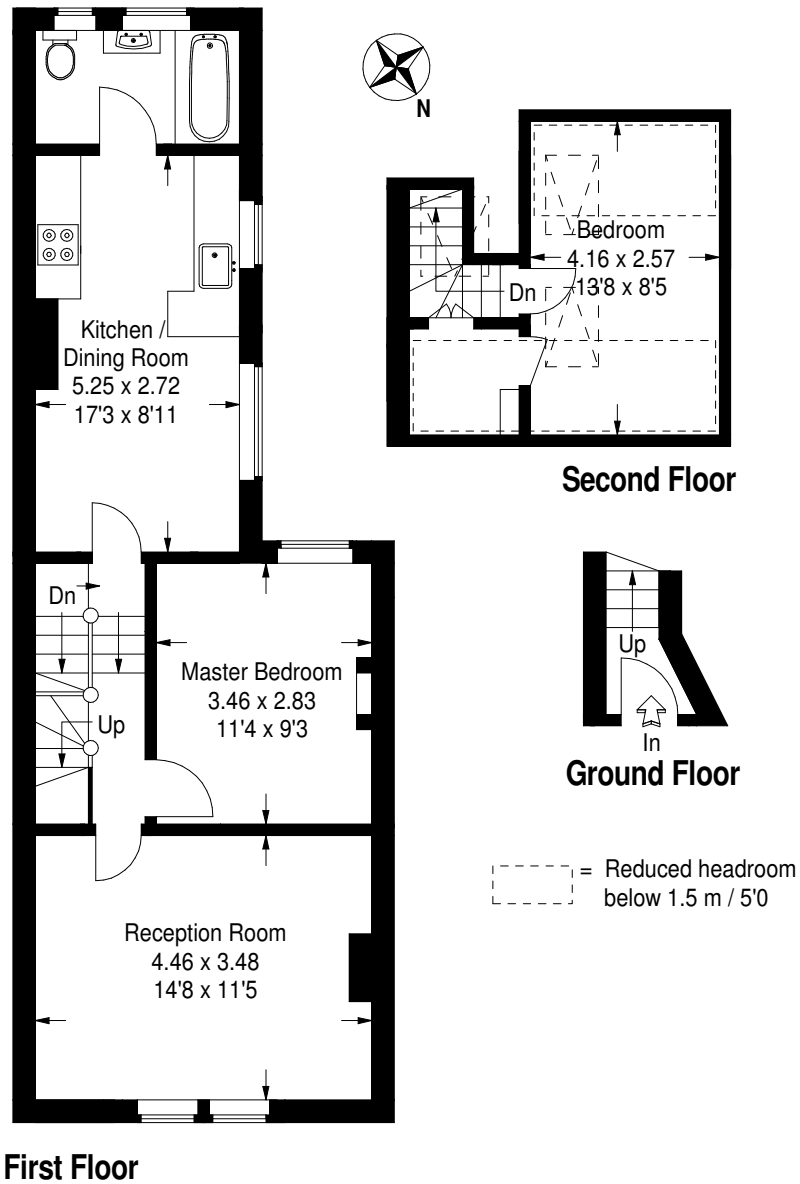
Wellfield Road

Approximate Gross Internal Area (Excluding Reduced Headroom)

59.3 sq m / 638 sq ft

Reduced Headroom = 7.7 sq m / 83 sq ft

Total = 67 sq m / 721 sq ft



This plan is for layout guidance only. Not drawn to scale unless stated.
 Windows & door openings are approximate. Whilst every care is taken in the preparation of
 this plan, please check all dimensions, shapes & compass bearings before making any
 decisions reliant upon them. (ID254706)