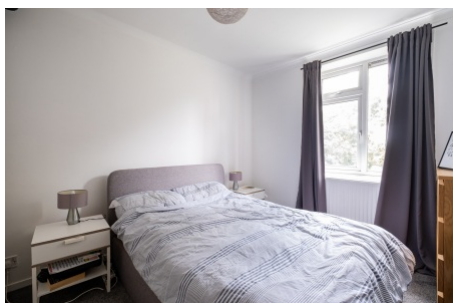


Ethelbert Street, Balham SW12

Tenure: Borough: Wandsworth

£325,000

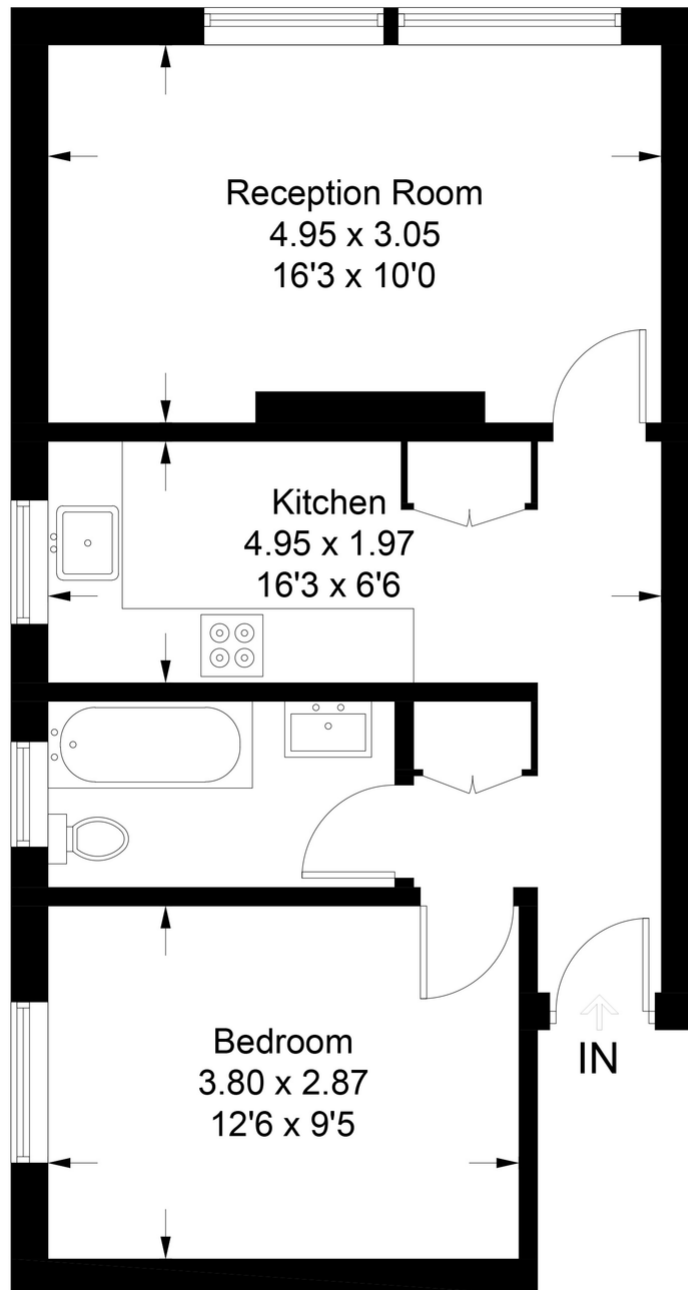
- Bright and airy one bedroom flat
- No Chain



A smartly presented one bedroom apartment in Balham. Located on the first floor of this smart block, the accommodation comprises; reception room with space for dining, modern fitted kitchen with appliances including a dishwasher, bathroom and double bedroom. The property is neutrally decorated throughout and benefits from ample storage, it is also sold with no onward chain. Brilliantly located for easy access to Balham underground station on the Northern Line and mainline station for direct links to London Victoria and Clapham Junction. Balham High Road offers an array of amenities including bars, cafes and restaurants, boutique shopping and supermarkets. Additionally, the open spaces of Tooting Bec Common with its famous lido are a short walk away.

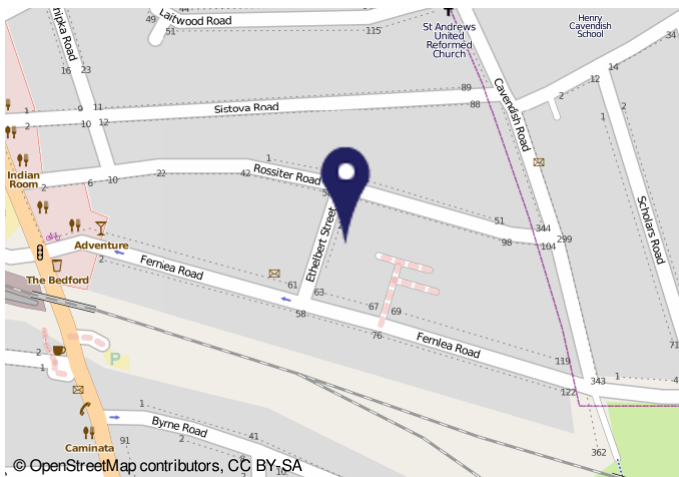
Ethelbert Street

Approximate Gross Internal Area = 46.2 sq m / 497 sq ft



First Floor

This plan is for layout guidance only. Not drawn to scale unless stated. Windows and door openings are approximate. Whilst every care is taken in the preparation of this plan, please check all dimensions, shapes and compass bearings before making any decisions reliant upon them. (ID1020152)



© OpenStreetMap contributors, CC BY-SA



Important Notice

In accordance with the Property Misdescriptions Act (1991) we have prepared these sales particulars as a general guide to give a broad description of the property. They are not intended to constitute part of an offer or contract. We have not carried out a structural survey and the services, appliances and specific fittings have not been tested. All photographs, measurements, floor plans and distances referred to are given as a guide only and should not be relied upon for the purchase of carpets or any other fixtures or fittings. Lease details, service charges and ground rent (where applicable) are given as a guide only and should be checked and confirmed by your solicitor prior to exchange of contracts.