

Babington Road, Streatham SW16

Tenure: Share of Freehold Borough: Lambeth

Guide Price £390,000

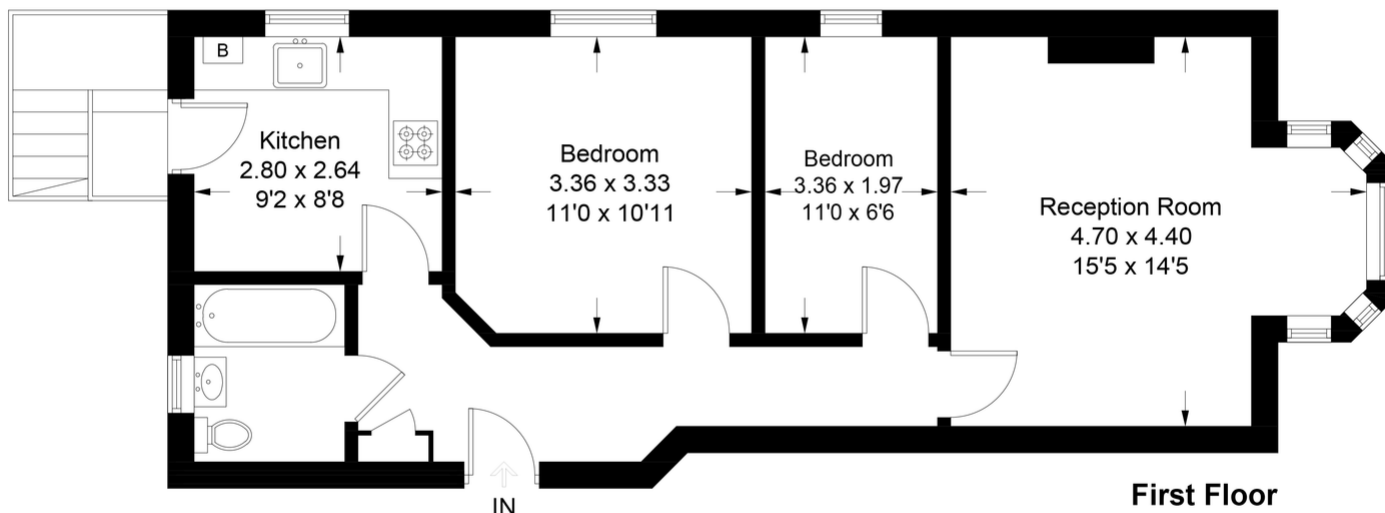
- Beautiful parquet floors and feature bay window
- Very close to Streatham station and Thameslink line



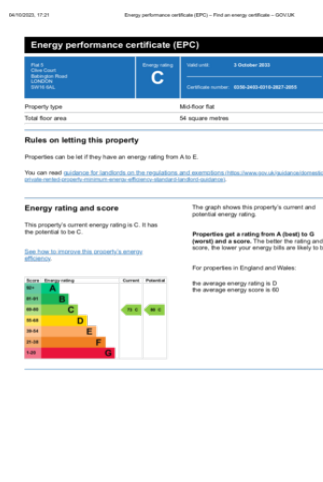
This lovely apartment offers a brilliant reception space with a large bay window as well as a convenient separate kitchen with rear access. The flat is well presented throughout, with a spacious main bedroom and is on the first floor of a small, stand alone, purpose-built block. There is a communal outdoor space and only a short walk to Streatham overground station and the Thameslink line, plus a host of excellent shops, cafes, bars and restaurants. The open spaces of Tooting Bec Common with its famous Lido is also nearby, and a 10 minute bus journey will get you to Tooting Bec underground station on the Northern Line. The apartment benefits from a share of the freehold, a full re-wire, a new boiler and is sold with no onward chain.

Tenure: Share of Freehold

Approximate Gross Internal Area
57.3 sq m / 617 sq ft



© OpenStreetMap contributors, CC BY-SA



Important Notice
In accordance with the Property Misdescriptions Act (1991) we have prepared these sales particulars as a general guide to give a broad description of the property. They are not intended to constitute part of an offer or contract. We have not carried out a structural survey and the services, appliances and specific fittings have not been tested. All photographs, measurements, floor plans and distances referred to are given as a guide only and should not be relied upon for the purchase of carpets or any other fixtures or fittings. Lease details, service charges and ground rent (where applicable) are given as a guide only and should be checked and confirmed by your solicitor prior to exchange of contracts.