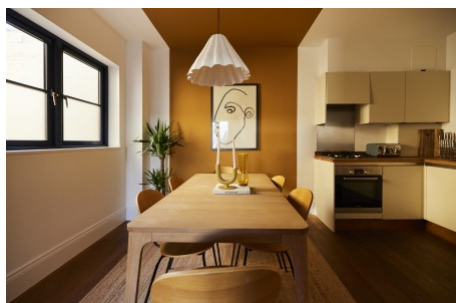
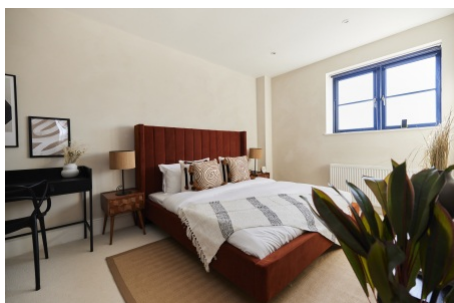


Tooting High Street, Tooting SW17

Tenure: Leasehold Borough: Wandsworth

£700,000

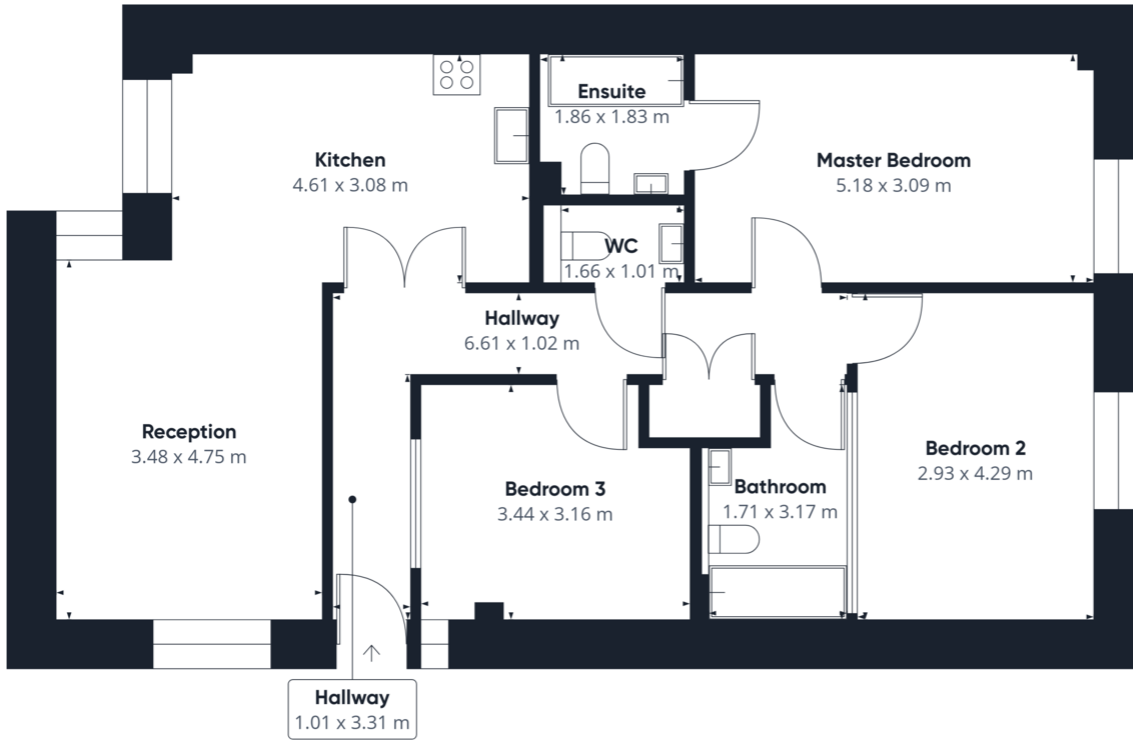
- Stunning three double bedroom, two bathroom apartment
- Private terrace and communal courtyard



A stunning three double bedroom apartment, with two bathrooms and a private terrace in the sought after gated development Bateman Yards. Situated seconds from Tooting Broadway tube station on the Northern Line and an array of high street amenities including multi award winning and premier outdoor market, Tooting Market. The property boasts almost 1000 sqft of living space, with a large open plan kitchen reception room and additional WC.

Tenure: Leasehold

Lease length: 125 years from 2018

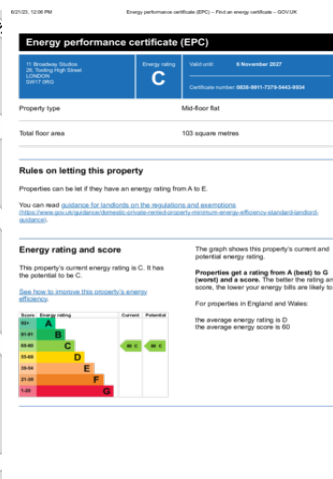
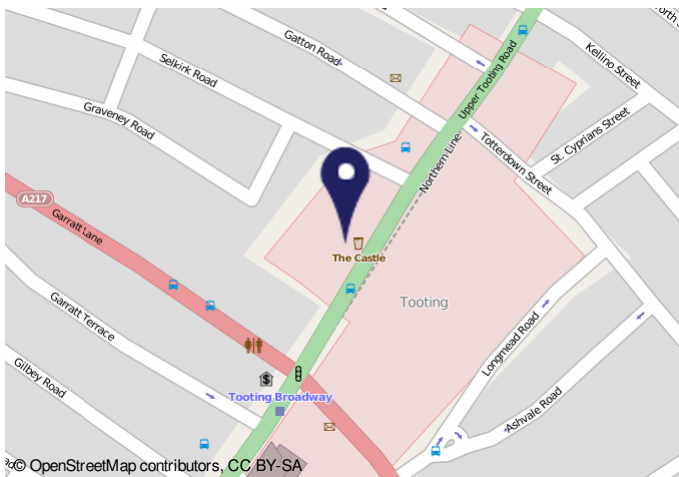


Approximate total area⁽¹⁾
92.64 m²

(1) Excluding balconies and terraces

While every attempt has been made to ensure accuracy, all measurements are approximate, not to scale. This floor plan is for illustrative purposes only.

GIRAFFE360



Important Notice

In accordance with the Property Misdescriptions Act (1991) we have prepared these sales particulars as a general guide to give a broad description of the property. They are not intended to constitute part of an offer or contract. We have not carried out a structural survey and the services, appliances and specific fittings have not been tested. All photographs, measurements, floor plans and distances referred to are given as a guide only and should not be relied upon for the purchase of carpets or any other fixtures or fittings. Lease details, service charges and ground rent (where applicable) are given as a guide only and should be checked and confirmed by your solicitor prior to exchange of contracts.