

Baldry Gardens, Streatham SW16

Tenure: Freehold Borough: Lambeth

Offers in excess of £1,000,000

- Semi-detached Edwardian house
- Six bedrooms



This wonderful family home is located in one of the most popular areas for families in Streatham. The quiet residential street has great access to the amenities of the high road, rail transport from Streatham Common station as well as the wide open spaces of Streatham Common, the Rookery and a number of schools. The house is very large with six bedrooms, two bathrooms, cellar and three receptions making up some of the accommodation. There are a number of lovely period features, a private 70 foot rear garden and the house is sold with no onward chain.

Council Tax Band: G

Baldry Gardens

Approximate Gross Internal Area Total = 261.4 sq m / 2814 sq ft

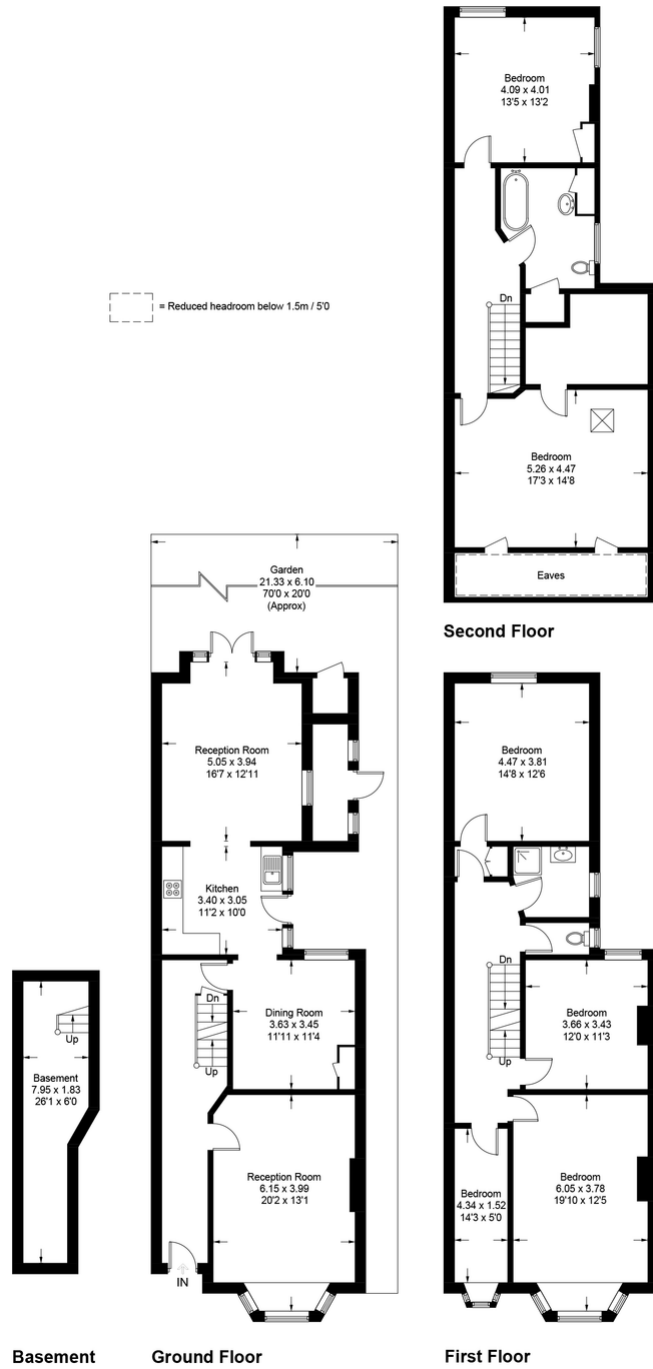
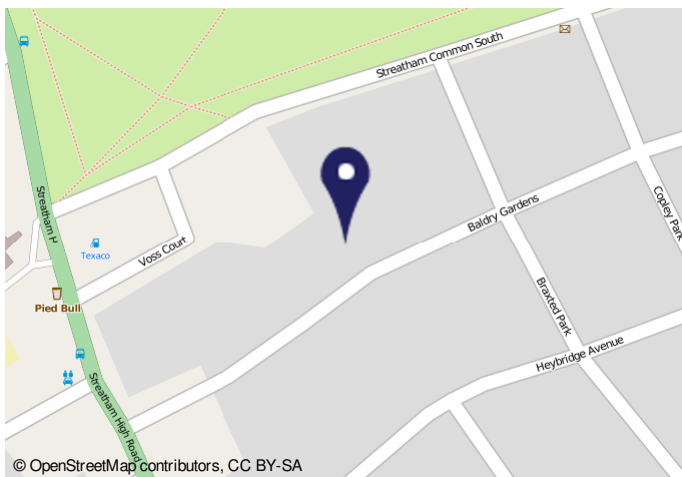


Illustration for identification purposes only, measurements are approximate, not to scale. FloorplansUsketch.com © 2023 (ID1002851)



Important Notice

In accordance with the Property Misdescriptions Act (1991) we have prepared these sales particulars as a general guide to give a broad description of the property. They are not intended to constitute part of an offer or contract. We have not carried out a structural survey and the services, appliances and specific fittings have not been tested. All photographs, measurements, floor plans and distances referred to are given as a guide only and should not be relied upon for the purchase of carpets or any other fixtures or fittings. Lease details, service charges and ground rent (where applicable) are given as a guide only and should be checked and confirmed by your solicitor prior to exchange of contracts.