

Deerhurst Road, Streatham SW16

Tenure: Freehold Borough: Lambeth

Offers in excess of £1,150,000

- Fabulous end of terrace house on wide corner plot
- Lovely sunny, landscaped garden

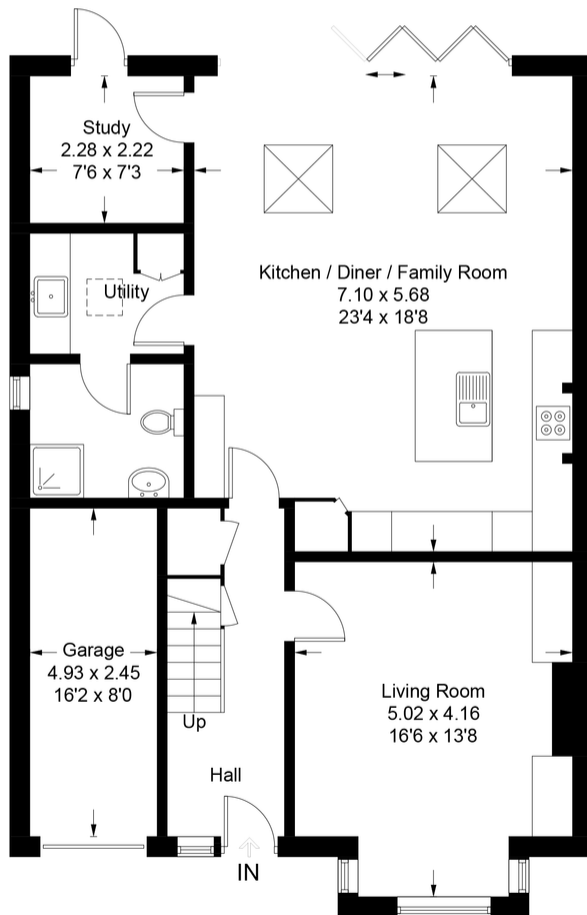


A beautifully presented four bedroom, three bathroom house on the corner plot of a quiet residential street with Streatham Common at the other end. The house has been extended to the rear and opened up to present a magnificent kitchen, dining and reception space leading to the large, landscaped garden via bi-folding doors. There is also a separate shower room, utility and study on the ground floor as well as an attached garage. Deerhurst Rd is a very small residential street that has great access to Streatham and Streatham Common stations, the lovely Rookery and a wealth of shops, bars and restaurants nearby.

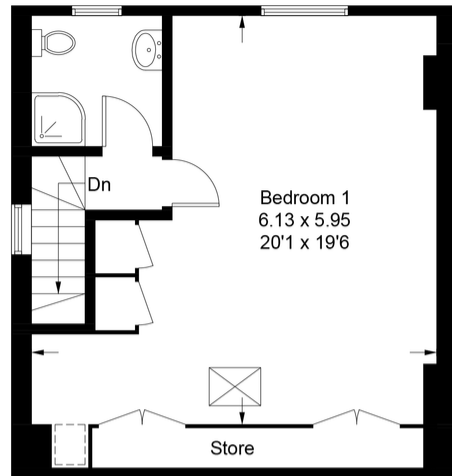
Council Tax Band: E

Deerhurst Road

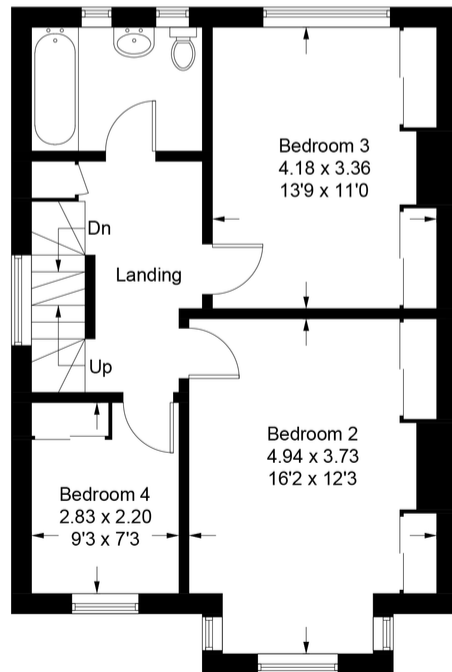
Approximate Gross Internal Area Total = 188.8 sq m / 2031 sq ft



Ground Floor
Sq ft 1021

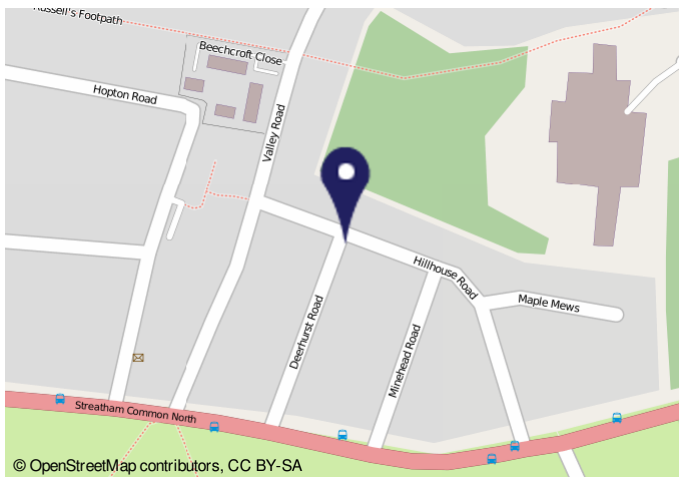


Second Floor
Sq ft 439

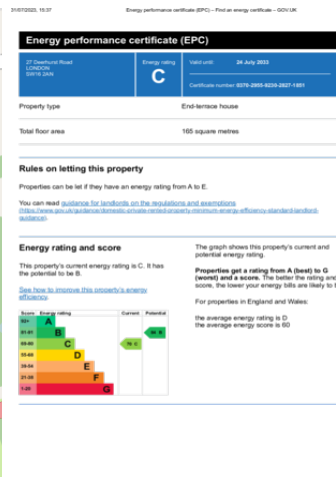


First Floor
Sq ft 571

Illustration for identification purposes only, measurements are approximate, not to scale. FloorplansUsketch.com © 2023 (ID993779)



© OpenStreetMap contributors, CC BY-SA



Important Notice
In accordance with the Property Misdescriptions Act (1991) we have prepared these sales particulars as a general guide to give a broad description of the property. They are not intended to constitute part of an offer or contract. We have not carried out a structural survey and the services, appliances and specific fittings have not been tested. All photographs, measurements, floor plans and distances referred to are given as a guide only and should not be relied upon for the purchase of carpets or any other fixtures or fittings. Lease details, service charges and ground rent (where applicable) are given as a guide only and should be checked and confirmed by your solicitor prior to exchange of contracts.