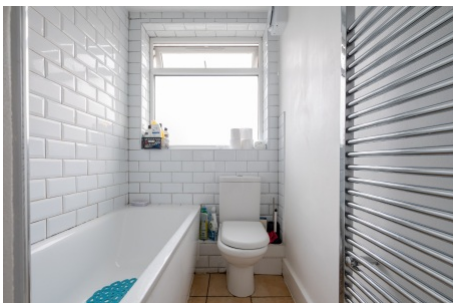


Beechcroft Close, Valley Road, Streatham SW16

Tenure: Leasehold Borough: Lambeth

Offers in excess of £300,000

- Spacious two double bedroom apartment
- Excellent location close to Streatham Common



This apartment offers great space with two double bedrooms, a generous reception room, separate kitchen and recently renovated bathroom. It benefits from plenty of fitted storage space and is larger in comparison to period properties. It is also bright and well maintained and forms part of a really well-managed, securely-gated development. Located in an excellent position just moments from the open spaces of Streatham Common and Rookery, but also a short walk to Streatham Station for access to the Thameslink line or Streatham Common station to get to Victoria. The flat is offered with a long leasehold and no onward chain.

Tenure: Leasehold

