

Oakdale Road, Streatham SW16

Tenure: Borough: Lambeth

£440,000

- Three bedroom, Two bathroom period conversion
- Being sold through online auction

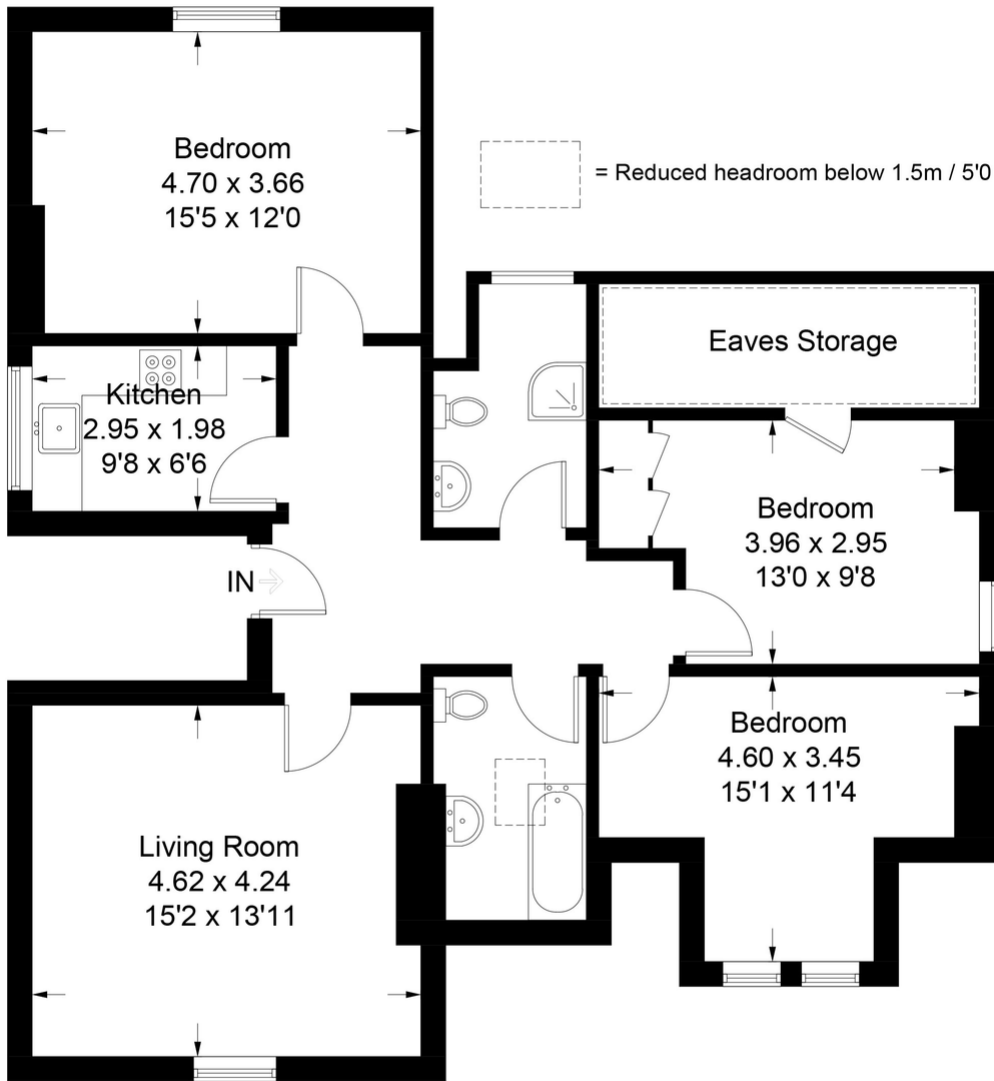


* Being Sold by Online Auction * Starting Bids from: £440,000 * Buy it now option available *

A bright and spacious three bedroom, two bathroom apartment occupying the top floor of this handsome Victorian villa. The property is well located on a quiet residential road, moments from Streatham station and local cafes, supermarkets and the leisure centre on Streatham High Road. The open spaces of Streatham Common and The Rookery are also a short walk away.

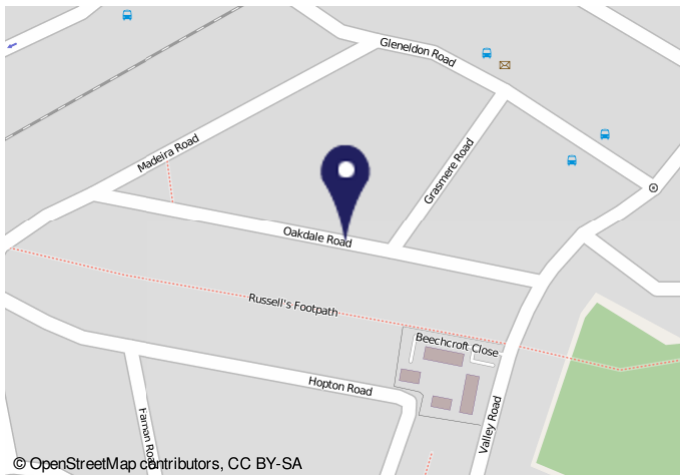
Oakdale Road

Approximate Gross Internal Area Total = 93.3 sq m / 1004 sq ft
(Excluding Eaves Storage)



Second Floor

Illustration for identification purposes only, measurements are approximate, not to scale. FloorplansUsketch.com © 2020 (ID703659)



© OpenStreetMap contributors, CC BY-SA

09/12/2022, 10:39 Energy performance certificate (EPC) - Floor energy certificate - 1001/08

Energy performance certificate (EPC)	
14, Curlew Road Tottenham London, UK	Issue date: 28 January 2023 Certificate number: 0801-7428-0154-4000-0002
Property type	Top-floor flat
Total floor area	107 square metres

Rules on letting this property

Properties can be let if they have an energy rating from A to E.

You can read [guidance for landlords on the regulations and exemptions](#) ([https://www.gov.uk/landlords-owners-tenants/whats-new-to-energy-ratings-for-landlords](#))

Energy efficiency rating for this property

The property's current energy rating is D. It has the potential to be C.

[See how to improve this property's energy efficiency](#)

Score	Energy rating	Current	Potential
92-100	A		
81-91	B		
69-80	C		
55-68	D	55	68
39-54	E		
21-38	F		
1-20	G		

The graph shows the property's current and potential energy efficiency.

Properties are given a rating from A (most efficient) to G (least efficient).

Properties are also given a score. The higher the number the lower your fuel bills are likely to be.

For properties in England and Wales:
the average energy rating is D
the average energy score is 60

<https://www.energy-certificates.gov.uk/energy-certificates/0801-7428-0154-4000-0002>

Important Notice

In accordance with the Property Misdescriptions Act (1991) we have prepared these sales particulars as a general guide to give a broad description of the property. They are not intended to constitute part of an offer or contract. We have not carried out a structural survey and the services, appliances and specific fittings have not been tested. All photographs, measurements, floor plans and distances referred to are given as a guide only and should not be relied upon for the purchase of carpets or any other fixtures or fittings. Lease details, service charges and ground rent (where applicable) are given as a guide only and should be checked and confirmed by your solicitor prior to exchange of contracts.