

Heybridge Avenue, Streatham SW16

Tenure: Freehold Borough: Lambeth

£750,000

- Four bedroom two bathroom house
- South facing garden



A beautifully presented four bedroom house with two bathrooms and spacious eat-in kitchen. There is also a large separate reception with polished wooden floors. To the rear there is a lovely private garden with large decked area. Heybridge Avenue is excellently located for access to local schools, the wide open spaces of Streatham Common and the Rookery and overground rail links of Streatham Common, Streatham and Norbury Stations.

Tenure: Freehold

Council tax band: E

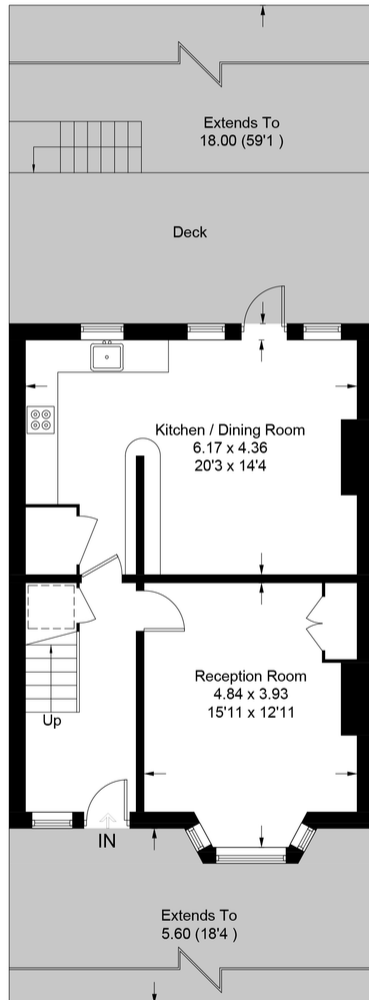
Heybridge Avenue

Approximate Gross Internal Area = 145.3 sq m / 1564 sq ft

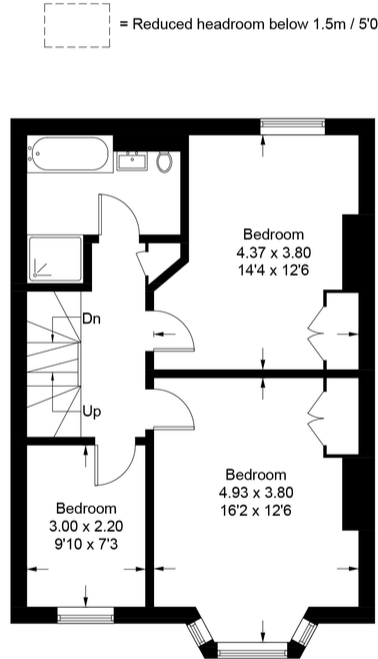
(Excluding Reduced Headroom / Eaves)

Reduced Headroom / Eaves = 13.9 sq m / 150 sq ft

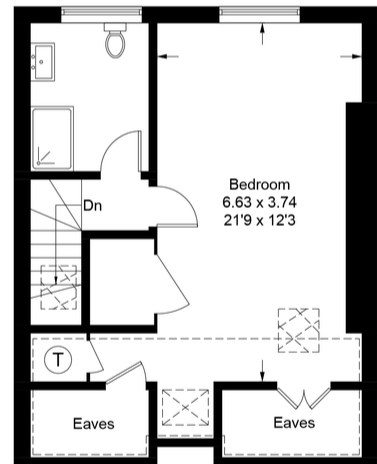
Total = 159.2 sq m / 1714 sq ft



Ground Floor

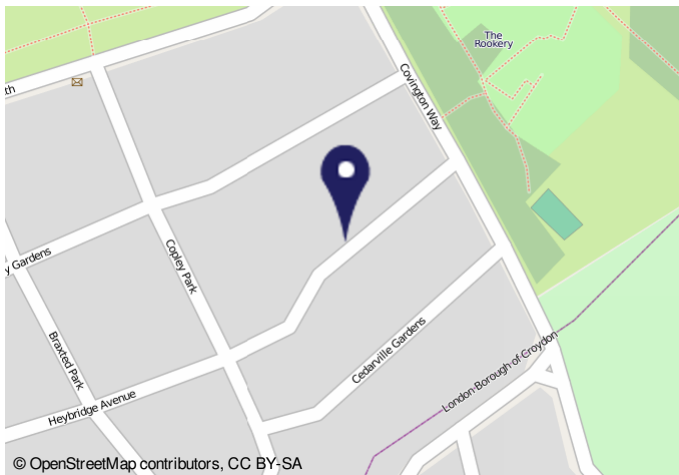


First Floor

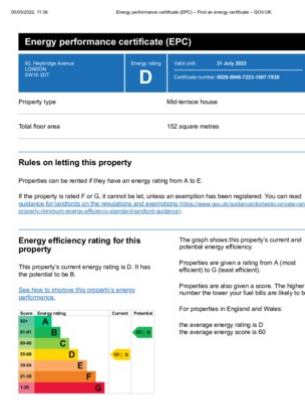


Second Floor

This plan is for layout guidance only. Not drawn to scale unless stated. Windows and door openings are approximate. Whilst every care is taken in the preparation of this plan, please check all dimensions, shapes and compass bearings before making any decisions reliant upon them. (ID859143)



© OpenStreetMap contributors, CC BY-SA



Important Notice

In accordance with the Property Misdescriptions Act (1991) we have prepared these sales particulars as a general guide to give a broad description of the property. They are not intended to constitute part of an offer or contract. We have not carried out a structural survey and the services, appliances and specific fittings have not been tested. All photographs, measurements, floor plans and distances referred to are given as a guide only and should not be relied upon for the purchase of carpets or any other fixtures or fittings. Lease details, service charges and ground rent (where applicable) are given as a guide only and should be checked and confirmed by your solicitor prior to exchange of contracts.