

243a Streatham High Road SW16

Tenure: Leasehold Borough:

£425,000

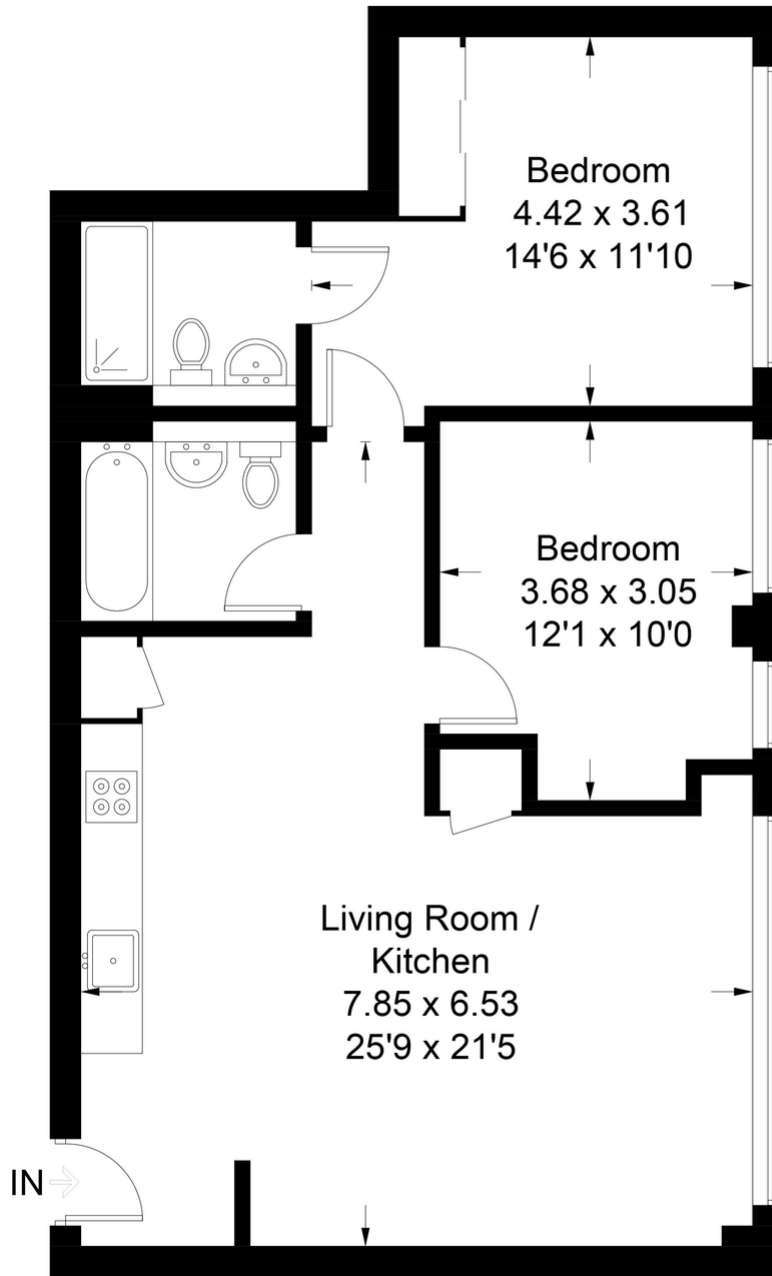
- Immaculate two bedroom two bathroom flat
- Light and airy



This is a very attractive flat with great light and space and in a great location for a choice of commuting into the city. Streatham station is directly opposite on the Thames Link service. Alternatively the bus garage is also close by and the start of many bus routes into the city and lastly Streatham Common station is only a short walk to give a route to victoria.

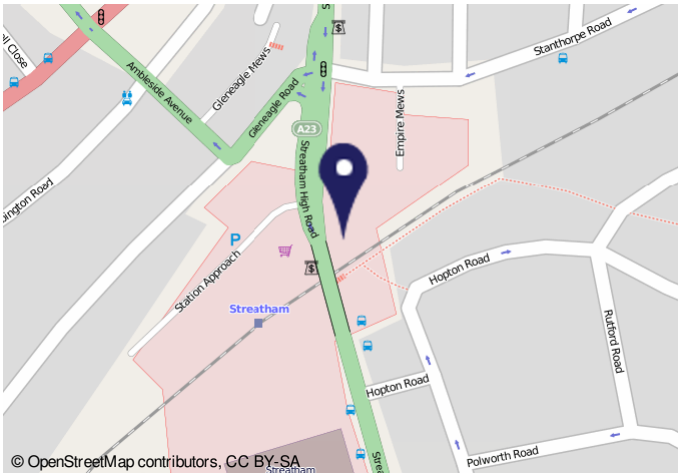
Hopton House

Approximate Gross Internal Area Total = 71.8 sq m / 773 sq ft



Second Floor

Illustration for identification purposes only, measurements are approximate, not to scale. FloorplansUsketch.com © 2022 (ID833690)



Important Notice
In accordance with the Property Misdescriptions Act (1991) we have prepared these sales particulars as a general guide to give a broad description of the property. They are not intended to constitute part of an offer or contract. We have not carried out a structural survey and the services, appliances and specific fittings have not been tested. All photographs, measurements, floor plans and distances referred to are given as a guide only and should not be relied upon for the purchase of carpets or any other fixtures or fittings. Lease details, service charges and ground rent (where applicable) are given as a guide only and should be checked and confirmed by your solicitor prior to exchange of contracts.