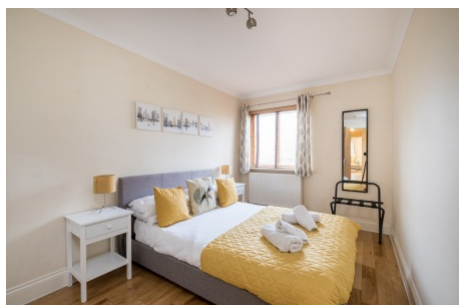


Streatham Common South, Streatham SW16

Tenure: Leasehold Borough: Lambeth

£499,950

- Beautifully finished three bedroom flat
- Over 1000sq ft of accommodation



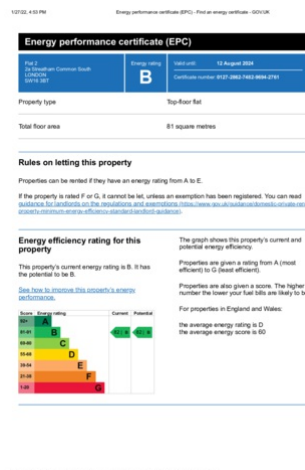
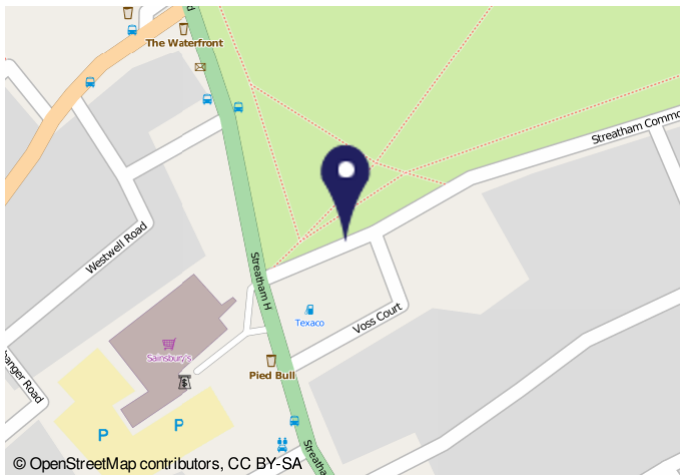
A beautiful three bedroom, split-level apartment that overlooks Streatham Common. The accommodation comprises two double bedrooms, large open-plan kitchen-diner and wonderful master-suite on the top floor that includes large bedroom, bathroom and dressing room. The flat is offered chain free and is well located for excellent transport, bars and restaurants and leisure facilities.

Streatham Common South

Approximate Gross Internal Area = 81.5 sq m / 877 sq ft
(Excluding Eaves / Reduced Headroom)
Eaves / Reduced Headroom = 17.1 sq m / 184 sq ft
Total = 98.6 sq m / 1061 sq ft



This plan is for layout guidance only. Not drawn to scale unless stated. Windows and door openings are approximate. Whilst every care is taken in the preparation of this plan, please check all dimensions, shapes and compass bearings before making any decisions reliant upon them. (ID827991)



Important Notice

In accordance with the Property Misdescriptions Act (1991) we have prepared these sales particulars as a general guide to give a broad description of the property. They are not intended to constitute part of an offer or contract. We have not carried out a structural survey and the services, appliances and specific fittings have not been tested. All photographs, measurements, floor plans and distances referred to are given as a guide only and should not be relied upon for the purchase of carpets or any other fixtures or fittings. Lease details, service charges and ground rent (where applicable) are given as a guide only and should be checked and confirmed by your solicitor prior to exchange of contracts.