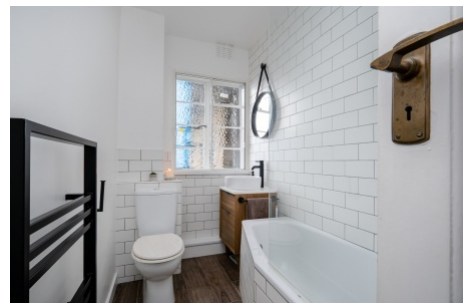


The High, Streatham High Road, Streatham SW16

Tenure: Leasehold Borough: Lambeth

£425,000

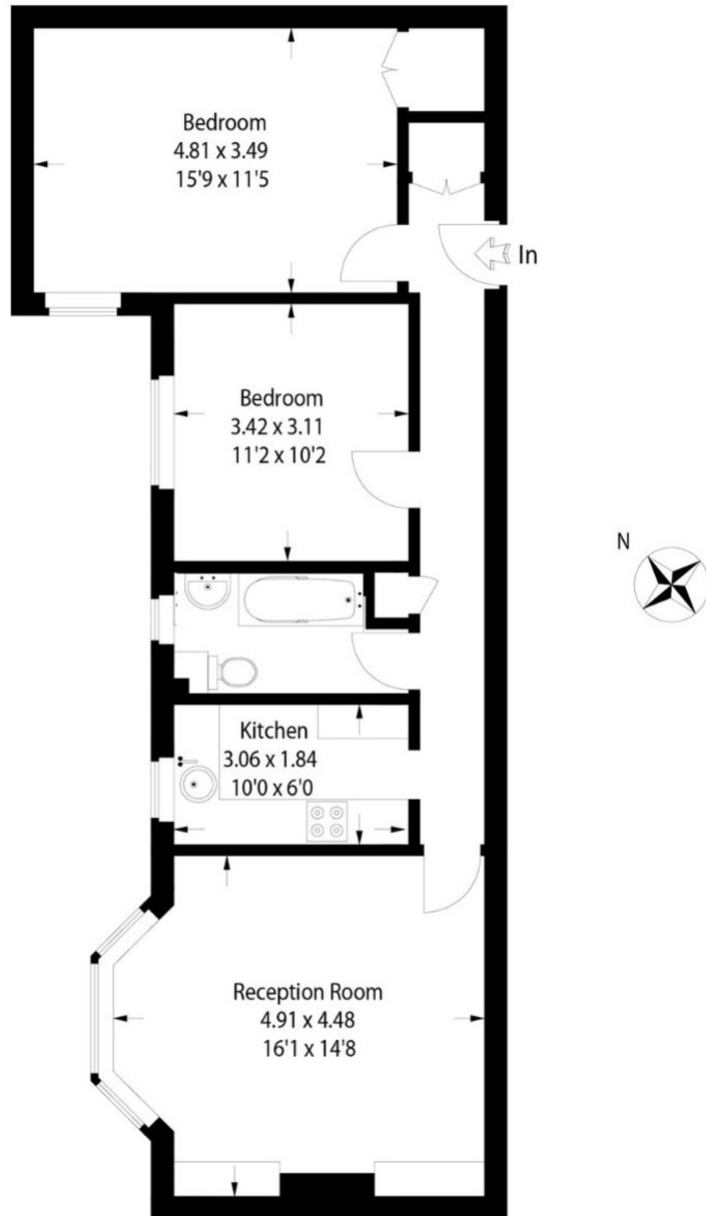
- Two large double bedrooms
- Art Deco building



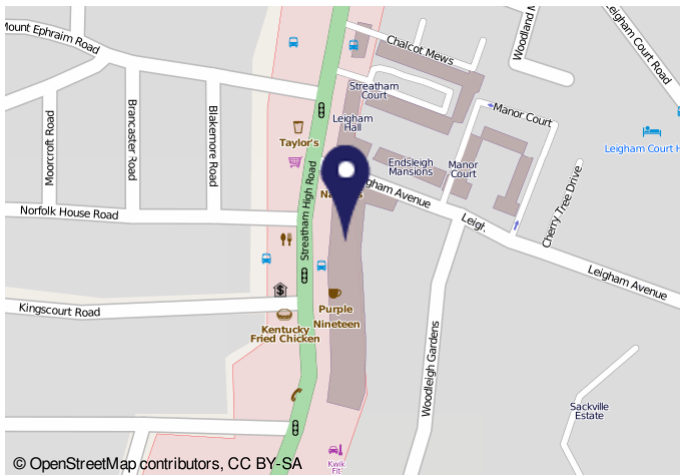
A beautifully presented two double bedroom flat in the heart of Streatham close to vibrant cafe's, charming bar/restaurants and local shops. The High is an excellently maintained art deco mansion block just a stones throw from Streatham Hill station with fantastic links into London Bridge, Balham and London Victoria. There is a lift and smart communal areas in keeping with the period when the block was built, plus a new communal garden. The property comprises a large reception room with period fireplace, modern kitchen and bathroom, plus two generous double bedrooms with brand new double glazing throughout.

The High

Approximate Gross Internal Area :-
71 sq m / 764 sq ft



This plan is for layout guidance only. Not drawn to scale unless stated. Windows & door openings are approximate. Whilst every care is taken in the preparation of this plan, please check all dimensions, shapes & compass bearings before making any decisions reliant upon them. (ID39306)



Important Notice

In accordance with the Property Misdescriptions Act (1991) we have prepared these sales particulars as a general guide to give a broad description of the property. They are not intended to constitute part of an offer or contract. We have not carried out a structural survey and the services, appliances and specific fittings have not been tested. All photographs, measurements, floor plans and distances referred to are given as a guide only and should not be relied upon for the purchase of carpets or any other fixtures or fittings. Lease details, service charges and ground rent (where applicable) are given as a guide only and should be checked and confirmed by your solicitor prior to exchange of contracts.