

## Thornlaw Road, West Norwood SE27

Tenure: Borough: Lambeth

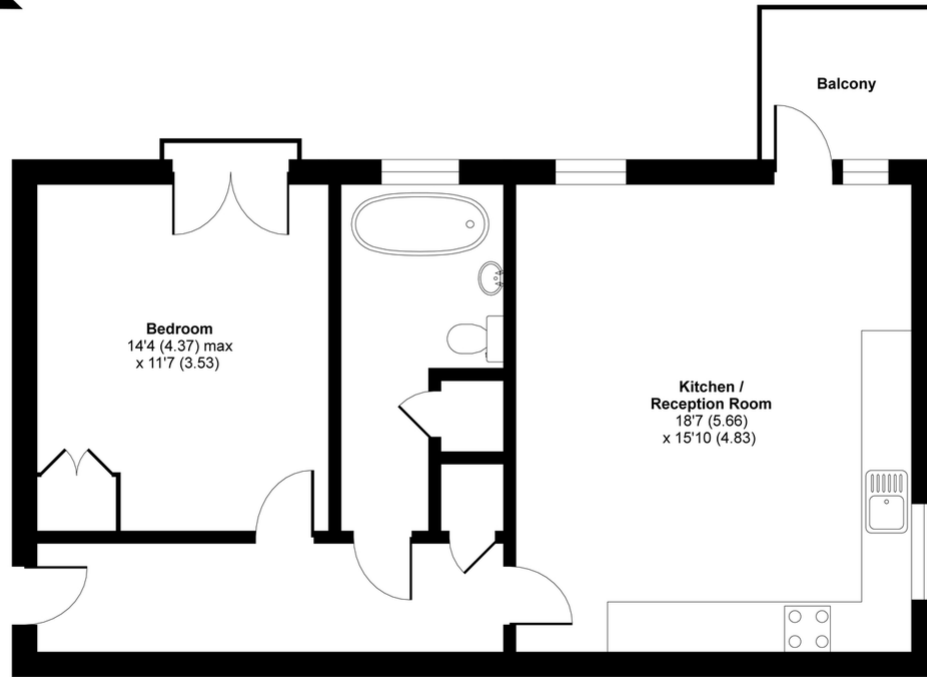
**£225,000**

- OVER 55's development
- Balcony



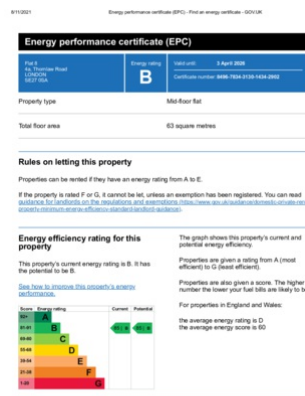
Cheviot Gardens is a modern development set in West Norwood, within a residential area with many local amenities to enjoy with friends and family, including shops and cafés, restaurants, a library, church and green spaces at Norwood Park and Streatham Common. West Norwood station is just a short walk from the property, and there are numerous local bus services. This is a very attractive modern first floor flat with open plan layout and direct access to a balcony. The reception/kitchen room is dual aspect so is always light and bright. The double bedroom features a wardrobe with plenty of storage. Residents accepted from 55 years of age. Benefits from access to communal facilities lounge, restaurant, laundry, garden, activities room, hairdressing salon, social activities. Residents can also buy into a range of care packages available.

For identification only - Not to scale



**Certified  
Property  
Measurer**

A map snippet showing a blue location pin on St. Julian's Farm Road. The map includes labels for Thorntlaw Road, Cadenwick Rd, Knights Hill Square, and Knights Hill. A copyright notice at the bottom reads: © OpenStreetMap contributors, CC BY-SA.



In accordance with the Property Misdescriptions Act (1991) we have prepared these sales particulars as a general guide to give a broad description of the property. They are not intended to constitute part of an offer or contract. We have not carried out a structural survey and the services, appliances and specific fittings have not been tested. All photographs, measurements, floor plans and distances referred to are given as a guide only and should not be relied upon for the purchase of carpets or any other fixtures or fittings. Lease details, service charges and ground rent (where applicable) are given as a guide only and should be checked and confirmed by your solicitor prior to exchange of contracts.