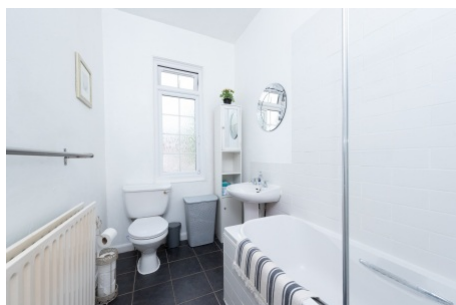
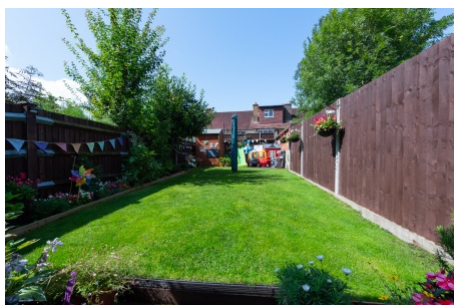


Norton Gardens, Norbury SW16

Tenure: Freehold Borough: Lambeth

£400,000

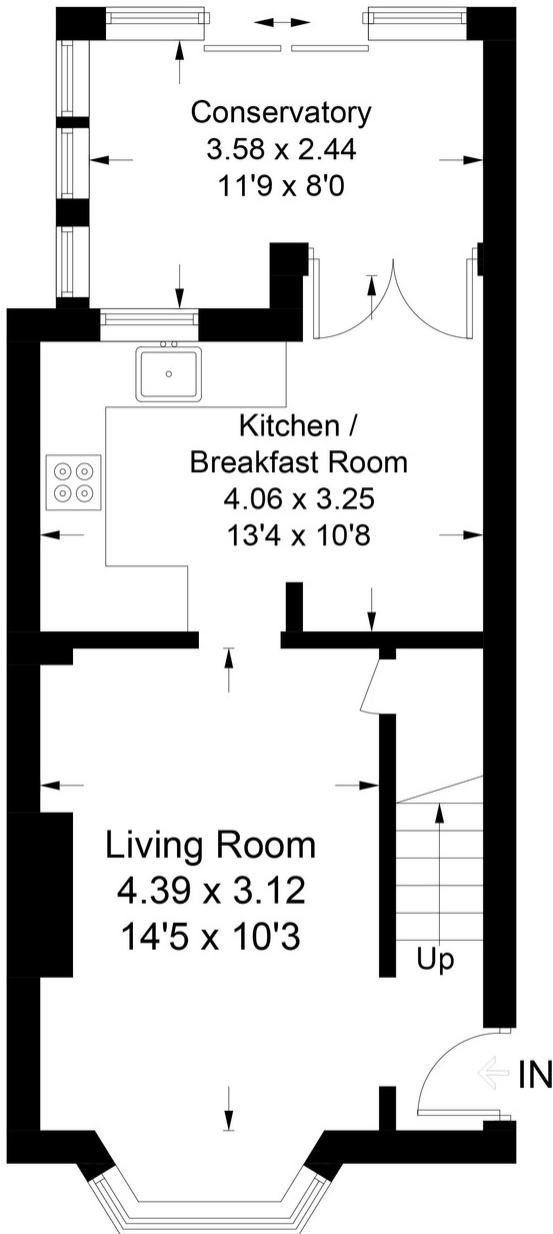
- Freehold house
- Lovely private west-facing garden



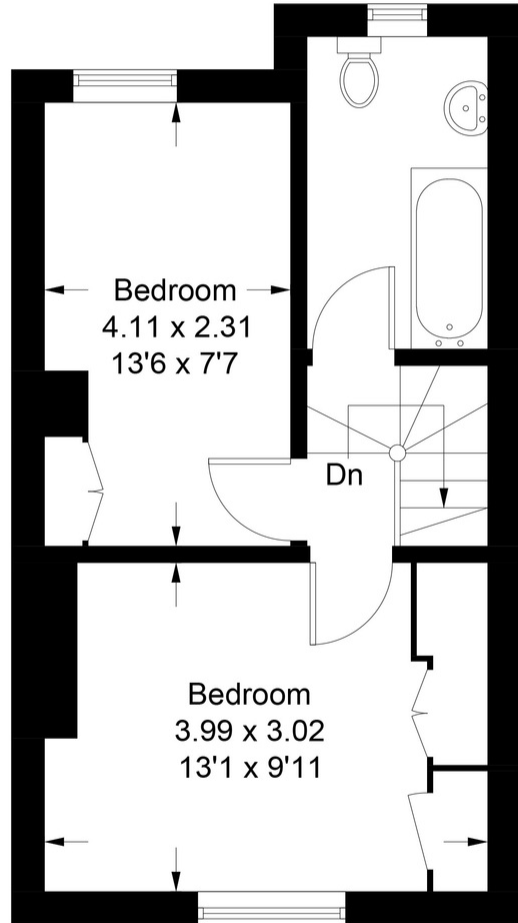
This charming two bedroom freehold house is on a quiet residential street a short walk from the shops, bars and restaurants of Norbury. It also has the benefit of being close to the excellent overground rail station with great links to the City. The property is presented in excellent order with a wealth of living space including large reception, kitchen-breakfast room and conservatory overlooking the lovely west-facing garden.

Norton Gardens

Approximate Gross Internal Area Total = 70.6 sq m / 760 sq ft

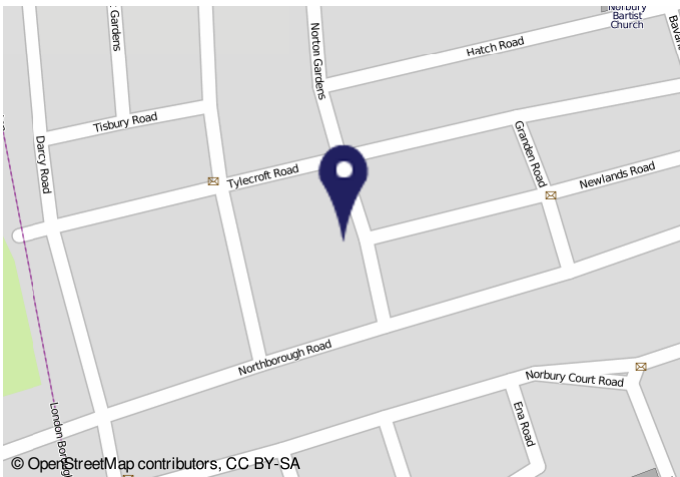


Ground Floor
Sq ft 436



First Floor
Sq ft 324

Illustration for identification purposes only, measurements are approximate, not to scale. FloorplansUsketch.com © 2021 (ID786918)



Important Notice

In accordance with the Property Misdescriptions Act (1991) we have prepared these sales particulars as a general guide to give a broad description of the property. They are not intended to constitute part of an offer or contract. We have not carried out a structural survey and the services, appliances and specific fittings have not been tested. All photographs, measurements, floor plans and distances referred to are given as a guide only and should not be relied upon for the purchase of carpets or any other fixtures or fittings. Lease details, service charges and ground rent (where applicable) are given as a guide only and should be checked and confirmed by your solicitor prior to exchange of contracts.