

Salford Road, Balham SW2

Tenure: Leasehold Borough: Lambeth

Offers in excess of £550,000

- Stunning period conversion
- Private garden

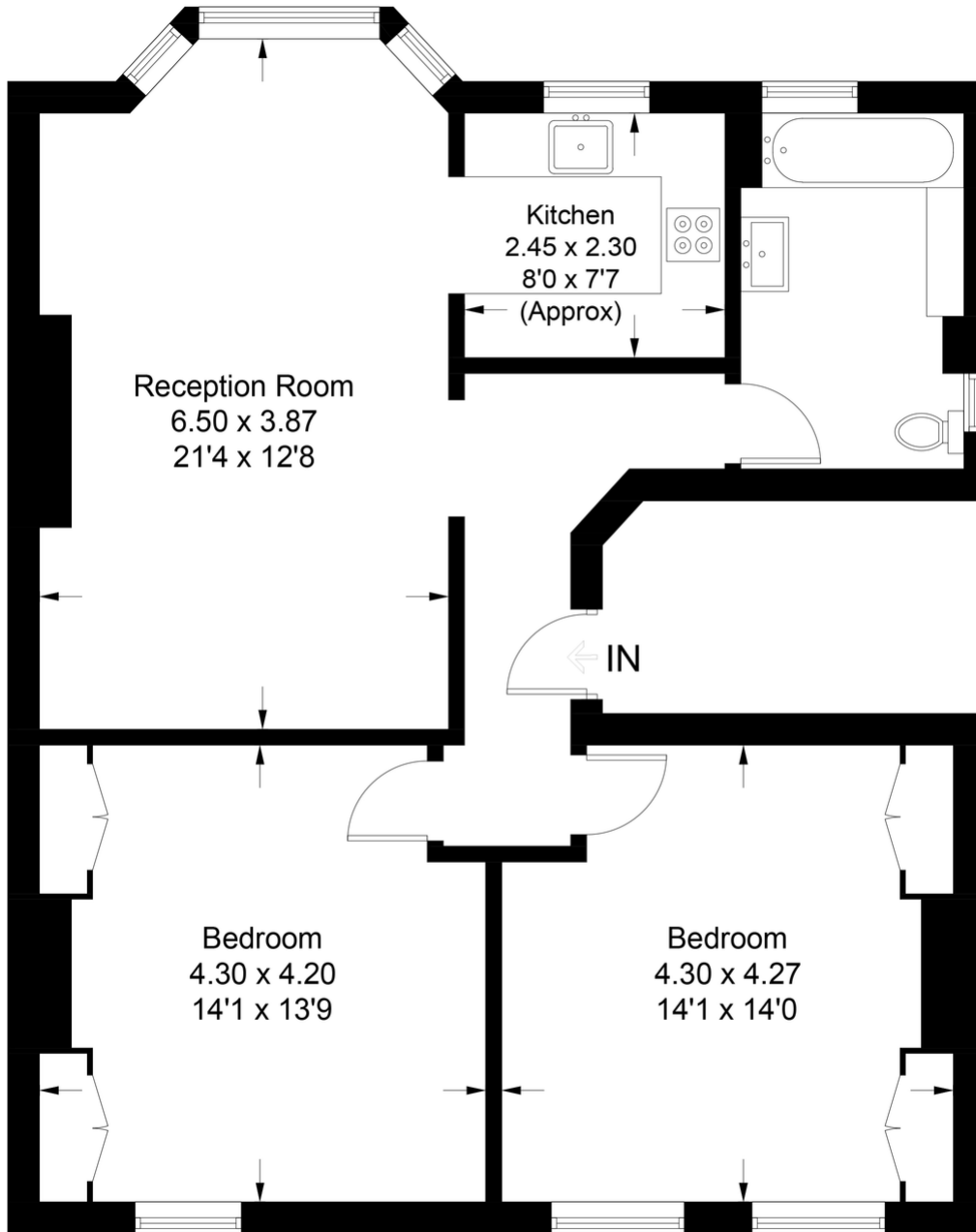


This stunning apartment is arranged over the entire first floor of a handsome Edwardian building on Salford Road, just moments from Tooting Bec Common and tube links at Balham. The beautifully appointed accommodation comprises a huge open-plan kitchen and reception space with loads of room for a dining table and seating area. The two double bedrooms are spacious and equal in size, perfect for additional work from home office space. The flat also comes with a private section of garden with an outdoor storage space large enough for bikes and is sold with no onward chain. Salford Road offers easy access to the shops, bars and restaurants of Balham and the same at Streatham Hill.

Salford Road

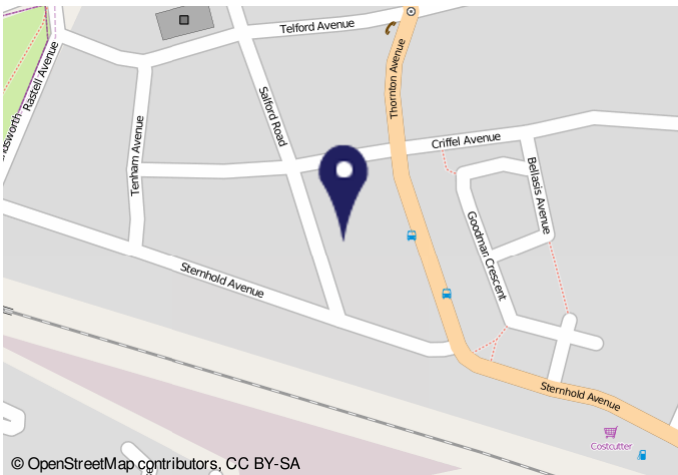


Approximate Gross Internal Area = 81.1 sq m / 873 sq ft



First Floor

This plan is for layout guidance only. Not drawn to scale unless stated. Windows and door openings are approximate. Whilst every care is taken in the preparation of this plan, please check all dimensions, shapes and compass bearings before making any decisions reliant upon them. (ID773867)



© OpenStreetMap contributors, CC BY-SA

Important Notice

In accordance with the Property Misdescriptions Act (1991) we have prepared these sales particulars as a general guide to give a broad description of the property. They are not intended to constitute part of an offer or contract. We have not carried out a structural survey and the services, appliances and specific fittings have not been tested. All photographs, measurements, floor plans and distances referred to are given as a guide only and should not be relied upon for the purchase of carpets or any other fixtures or fittings. Lease details, service charges and ground rent (where applicable) are given as a guide only and should be checked and confirmed by your solicitor prior to exchange of contracts.