

Babington Road, Streatham SW16

Tenure: Share of Freehold Borough: Lambeth

£350,000

- Very spacious top floor flat over 800 square feet
- Converted period building



A very large one bedroom flat with spacious reception room and kitchen breakfast room. The flat occupies the top floor of a period building located on a quiet residential road close to Streatham station and the high street amenities. Tooting bec common is a short walk away providing large open recreational space and the Lido.

Share of freehold

Babington Road

Approximate Gross Internal Area = 77.7 sq m / 837 sq ft

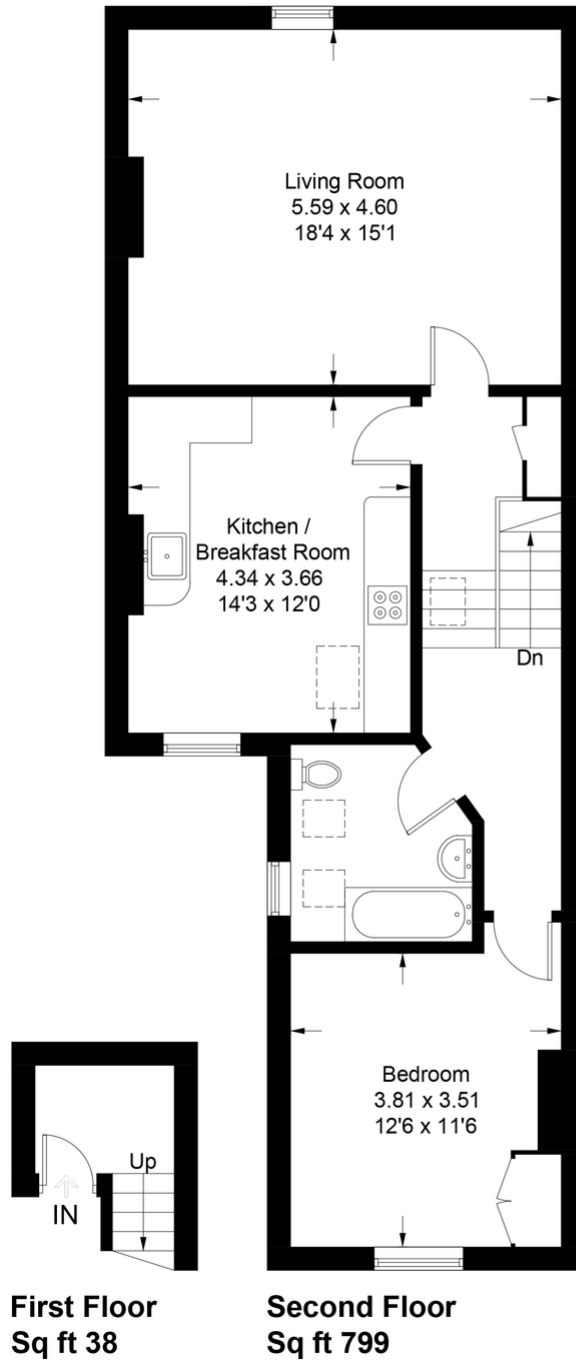
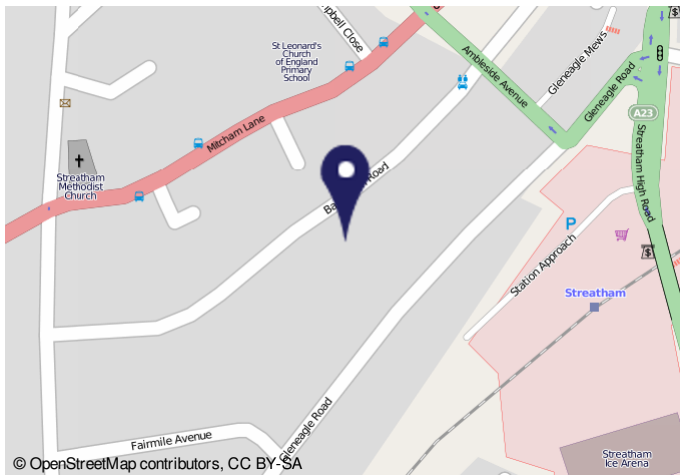


Illustration for identification purposes only, measurements are approximate, not to scale. FloorplansUsketch.com © 2021 (ID736355)



© OpenStreetMap contributors, CC BY-SA

Energy performance certificate (EPC)



Property type
Top-floor flat

Total floor area
73 square metres

Rules on letting this property
Properties can be rented if they have an energy rating from A to E.
If the property is rated F or G, it cannot be let, unless an exemption has been registered. You can read [guidance on letting properties with low energy ratings](#) on the Energy Performance Certificate website.

Energy efficiency rating for this property
This property's current energy rating is C. It has the potential to be C.
[See how to improve this property's energy performance.](#)

Important Notice
In accordance with the Property Misdescriptions Act (1991) we have prepared these sales particulars as a general guide to give a broad description of the property. They are not intended to constitute part of an offer or contract. We have not carried out a structural survey and the services, appliances and specific fittings have not been tested. All photographs, measurements, floor plans and distances referred to are given as a guide only and should not be relied upon for the purchase of carpets or any other fixtures or fittings. Lease details, service charges and ground rent (where applicable) are given as a guide only and should be checked and confirmed by your solicitor prior to exchange of contracts.