

Streatham High Road, Streatham SW16

Tenure: Leasehold Borough: Lambeth

£280,000

- Opposite Streatham Station
- Excellent modern development



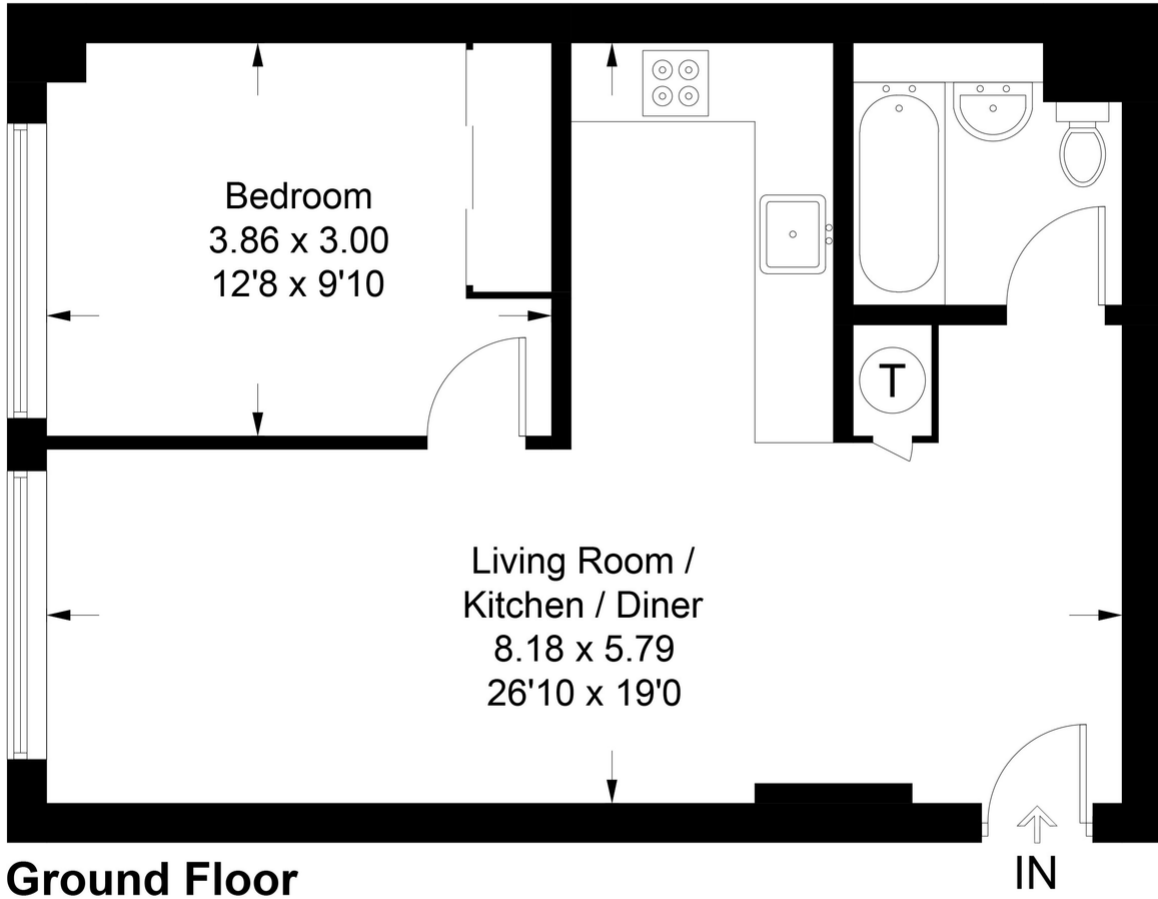
A lovely ground floor apartment in this recently converted building just moments from Streatham Station, offering excellent rail links to the City. The flat is spacious and bright with a fabulous reception, dining and kitchen area, modern bathroom and large bedroom. Streatham Common is close by as are the excellent shops, bars and restaurants of the High Road. It comes with a long leasehold and in wonderful decorative order.

Tenure: Leasehold

Lease length: 142 years remaining

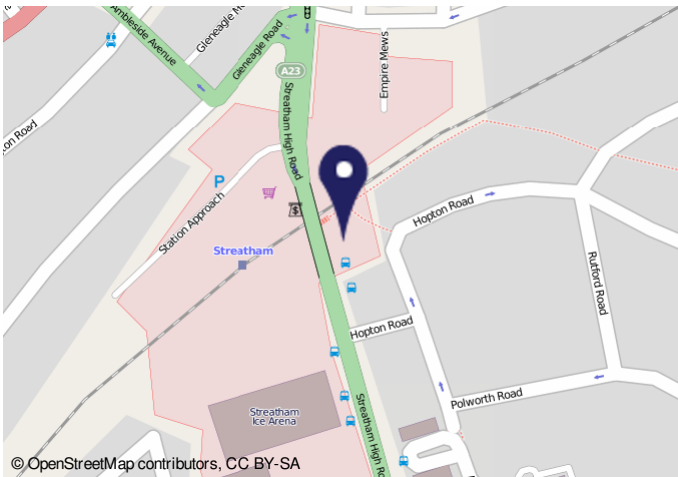
Hopton House

Approximate Gross Internal Area Total = 47.7 sq m / 513 sq ft



Ground Floor

Illustration for identification purposes only, measurements are approximate, not to scale. FloorplansUsketch.com © 2020 (ID704979)



© OpenStreetMap contributors, CC BY-SA

24/12/23, 09:22 Energy performance certificate (EPC) - Flat as energy certificate - GOV.UK

Energy performance certificate (EPC)	
Part 1 Floor space 23.00 square metres 23.00 square metres Part 1 2013	Energy rating 10 December 2023 Certificate number 9885 1071 2372 2014 4994
Property type	Ground-floor flat
Total floor area	47 square metres

Rules on letting this property

Properties can be let if they have an energy rating from A to E.

You can read [guidance for landlords on the regulations and exemptions](#) [https://www.gov.uk/business/energy-certificates/rental-properties/energy-efficiency-related-landlord-obligations](#)

44

Important Notice

In accordance with the Property Misdescriptions Act (1991) we have prepared these sales particulars as a general guide to give a broad description of the property. They are not intended to constitute part of an offer or contract. We have not carried out a structural survey and the services, appliances and specific fittings have not been tested. All photographs, measurements, floor plans and distances referred to are given as a guide only and should not be relied upon for the purchase of carpets or any other fixtures or fittings. Lease details, service charges and ground rent (where applicable) are given as a guide only and should be checked and confirmed by your solicitor prior to exchange of contracts.