

243a Streatham High Road, Streatham SW16

Borough: Lambeth

£1,550 pcm

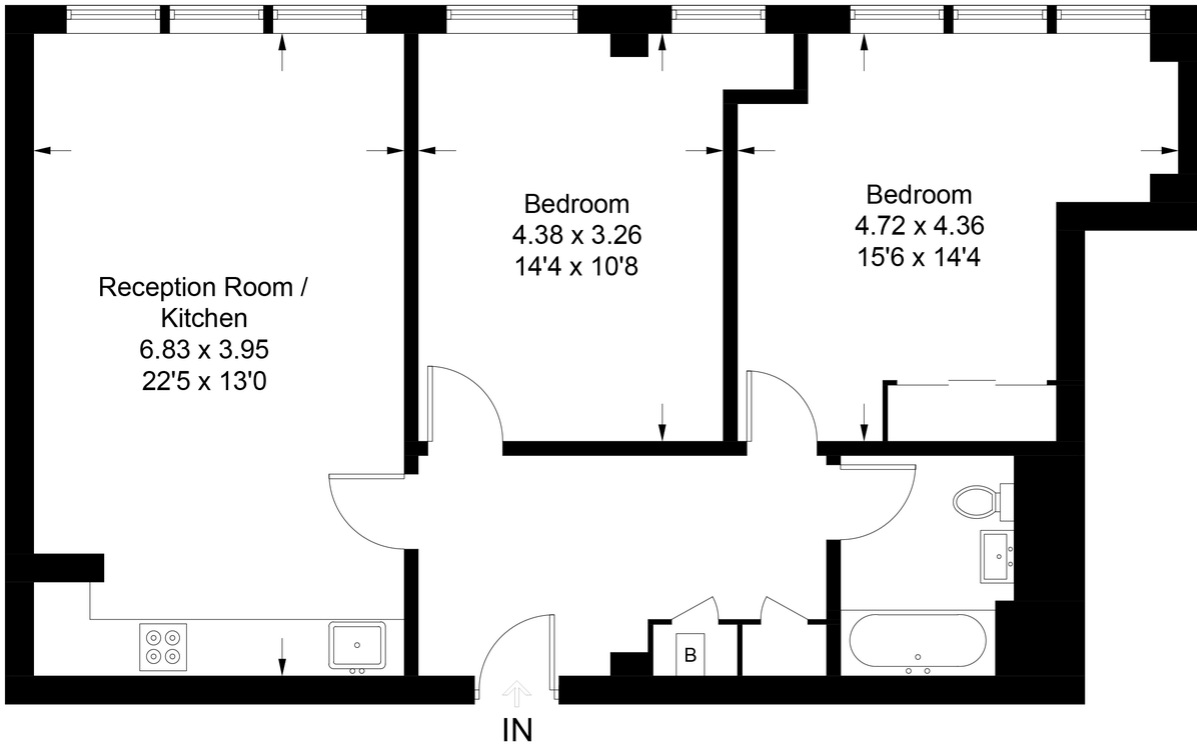
- Two double bedroom flat
- Ground floor



The property benefits from a spacious, open plan kitchen/living area with integrated appliances and a sleek white bathroom suite and two double bedrooms. Situated moments from Streatham Common and Streatham Station, this is a fantastic location with a lot of amenities close by. The block has a lift and video door entry system. There is also a private parking space available by private negotiations. Available beginning of January, part-furnished.

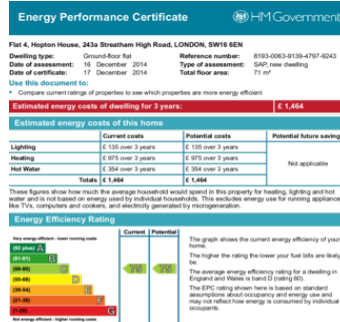
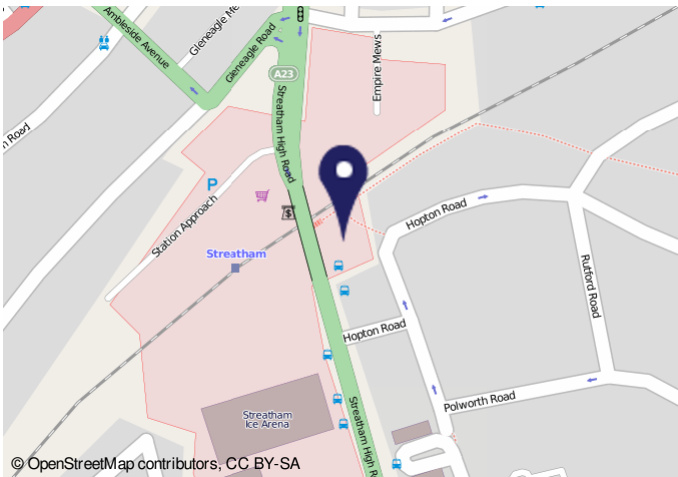
Hopton House

Approximate Gross Internal Area = 77.1 sq m / 830 sq ft



Ground Floor

This plan is for layout guidance only. Not drawn to scale unless stated. Windows and door openings are approximate. Whilst every care is taken in the preparation of this plan, please check all dimensions, shapes and compass bearings before making any decisions reliant upon them. (ID605614)



Important Notice
 In accordance with the Property Misdescriptions Act (1991) we have prepared these sales particulars as a general guide to give a broad description of the property. They are not intended to constitute part of an offer or contract. We have not carried out a structural survey and the services, appliances and specific fittings have not been tested. All photographs, measurements, floor plans and distances referred to are given as a guide only and should not be relied upon for the purchase of carpets or any other fixtures or fittings. Lease details, service charges and ground rent (where applicable) are given as a guide only and should be checked and confirmed by your solicitor prior to exchange of contracts.