

## Javelin Court, Streatham Common North SW16

Borough: Lambeth

**£1,850 pcm**

- Two large bedrooms
- Spacious modern kitchen

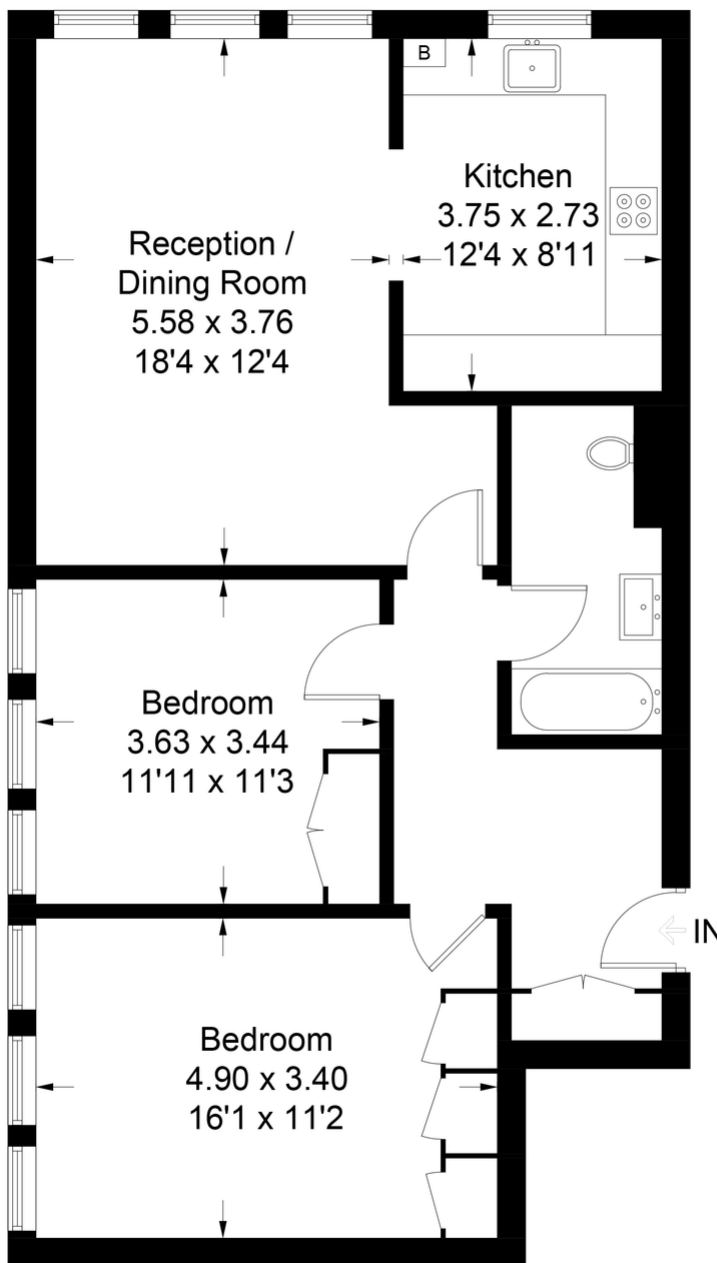


A stunning spacious two bedroom flat with far-reaching views over Streatham Common from the reception and Kitchen. The property is bright, immaculate and has a large separate kitchen. Set in attractive grounds just off the common. Streatham and Streatham Common stations are a short walk away as are the shops, bars and restaurants of the High Road. Available from the end of July, furnished.

Rent (£1,850pcm), 5 week security Deposit (£2,130.00), 12 month tenancy. Council tax band D, Lambeth.

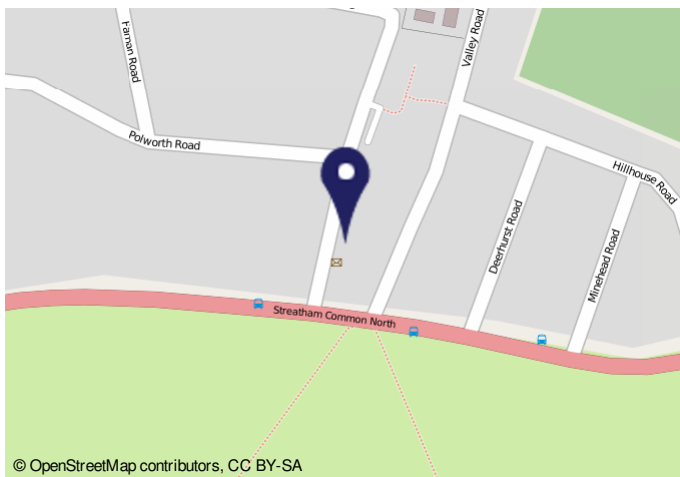
# Javelin Court

Approximate Gross Internal Area = 81.2 sq m / 874 sq ft



## Second Floor

This plan is for layout guidance only. Not drawn to scale unless stated. Windows and door openings are approximate. Whilst every care is taken in the preparation of this plan, please check all dimensions, shapes and compass bearings before making any decisions reliant upon them. (ID605041)



Energy Performance Certificate		
<p>Flat 18 Javelin Court, Southam Common North, LONDON, SW16 3HL                      Dwelling type: Mid-floor flat Reference number: 8706-2562-6726-6867-2143                      Date of assessment: 06 September 2014 Type of assessment: RdSAP existing dwelling                      Date of certificate: 08 September 2014 Total floor area: 81 m<sup>2</sup></p>		
<p>Use this document to:</p> <ul style="list-style-type: none"> <li>Compare current ratings of properties to see which properties are more energy efficient</li> <li>Find out how you can save energy and money by installing improvement measures</li> </ul>		
<p>Estimated energy costs of dwelling for 3 years:</p>		<p><b>£ 1,494</b></p>
<p>Over 3 years you could save:</p>		<p><b>£ 195</b></p>
<p>Estimated energy costs of this home</p>		
	Current costs	Potential costs
Lighting	£ 159 over 3 years	£ 159 over 3 years
Heating	£ 954 over 3 years	£ 756 over 3 years
Hot Water	£ 291 over 3 years	£ 294 over 3 years
	<b>Total: £ 1,404</b>	<b>£ 1,209</b>
		<p>Potential future savings</p> <p><b>You could save £ 195 over 3 years</b></p>
<p>These figures show how much the average household would spend in this property for heating, lighting and hot water and is not based on energy used by individual households. This includes energy use for heating appliances like TVs, computers and sockets, and electricity generated by microgeneration.</p>		
<p>Energy Efficiency Rating</p>		
<p>Energy efficient: lower energy costs</p> <p>For every A, B, C, D, E, F, G, H, I, J, K, L, M, N, O, P, Q, R, S, T, U, V, W, X, Y, Z, AA, AB, AC, AD, AE, AF, AG, AH, AI, AJ, AK, AL, AM, AN, AO, AP, AQ, AR, AS, AT, AU, AV, AW, AX, AY, AZ, BA, BB, BC, BD, BE, BF, BG, BH, BI, BJ, BK, BL, BM, BN, BO, BP, BQ, BR, BS, BT, BU, BV, BW, BX, BY, BZ, CA, CB, CC, CD, CE, CF, CG, CH, CI, CJ, CK, CL, CM, CN, CO, CP, CQ, CR, CS, CT, CU, CV, CW, CX, CY, CZ, DA, DB, DC, DD, DE, DF, DG, DH, DI, DJ, DK, DL, DM, DN, DO, DP, DQ, DR, DS, DT, DU, DV, DW, DX, DY, DZ, EA, EB, EC, ED, EE, EF, EG, EH, EI, EJ, EK, EL, EM, EN, EO, EP, EQ, ER, ES, ET, EU, EV, EW, EX, EY, EZ, FA, FB, FC, FD, FE, FF, FG, FH, FI, FJ, FK, FL, FM, FN, FO, FP, FQ, FR, FS, FT, FU, FV, FW, FX, FY, FZ, GA, GB, GC, GD, GE, GF, GG, GH, GI, GJ, GK, GL, GM, GN, GO, GP, GQ, GR, GS, GT, GU, GV, GW, GX, GY, GZ, HA, HB, HC, HD, HE, HF, HG, HH, HI, HJ, HK, HL, HM, HN, HO, HP, HQ, HR, HS, HT, HU, HV, HW, HX, HY, HZ, IA, IB, IC, ID, IE, IF, IG, IH, II, IJ, IK, IL, IM, IN, IO, IP, IQ, IR, IS, IT, IU, IV, IW, IX, IY, IZ, JA, JB, JC, JD, JE, JF, JG, JH, JI, JJ, JK, JL, JM, JN, JO, JP, JQ, JR, JS, JT, JU, JV, JW, JX, JY, JZ, KA, KB, KC, KD, KE, KF, KG, KH, KI, KJ, KK, KL, KM, KN, KO, KP, KQ, KR, KS, KT, KU, KV, KW, KX, KY, KZ, LA, LB, LC, LD, LE, LF, LG, LH, LI, LJ, LK, LL, LM, LN, LO, LP, LQ, LR, LS, LT, LU, LV, LW, LX, LY, LZ, MA, MB, MC, MD, ME, MF, MG, MH, MI, MJ, MK, ML, MM, MN, MO, MP, MQ, MR, MS, MT, MU, MV, MW, MX, MY, MZ, NA, NB, NC, ND, NE, NF, NG, NH, NI, NJ, NK, NL, NM, NN, NO, NP, NQ, NR, NS, NT, NU, NV, NW, NX, NY, NZ, OA, OB, OC, OD, OE, OF, OG, OH, OI, OJ, OK, OL, OM, ON, OO, OP, OQ, OR, OS, OT, OU, OV, OW, OX, OY, OZ, PA, PB, PC, PD, PE, PF, PG, PH, PI, PJ, PK, PL, PM, PN, PO, PP, PQ, PR, PS, PT, PU, PV, PW, PX, PY, PZ, QA, QB, QC, QD, QE, QF, QG, QH, QI, QJ, QK, QL, QM, QN, QO, QP, QQ, QR, QS, QT, QU, QV, QW, QX, QY, QZ, RA, RB, RC, RD, RE, RF, RG, RH, RI, RJ, RK, RL, RM, RN, RO, RP, RQ, RR, RS, RT, RU, RV, RW, RX, RY, RZ, SA, SB, SC, SD, SE, SF, SG, SH, SI, SJ, SK, SL, SM, SN, SO, SP, SQ, SR, SS, ST, SU, SV, SW, SX, SY, SZ, TA, TB, TC, TD, TE, TF, TG, TH, TI, TJ, TK, TL, TM, TN, TO, TP, TQ, TR, TS, TT, TU, TV, TW, TX, TY, TZ, UA, UB, UC, UD, UE, UF, UG, UH, UI, UJ, UK, UL, UM, UN, UO, UP, UQ, UR, US, UT, UY, UZ, VA, VB, VC, VD, VE, VF, VG, VH, VI, VJ, VK, VL, VM, VN, VO, VP, VQ, VR, VS, VT, VU, VV, VW, VX, VY, VZ, WA, WB, WC, WD, WE, WF, WG, WH, WI, WJ, WK, WL, WM, WN, WO, WP, WQ, WR, WS, WT, WU, WV, WW, WX, WY, WZ, XA, XB, XC, XD, XE, XF, XG, XH, XI, XJ, XK, XL, XM, XN, XO, XP, XQ, XR, XS, XT, XU, XV, XW, XX, XY, XZ, YA, YB, YC, YD, YE, YF, YG, YH, YI, YJ, YK, YL, YM, YN, YO, YP, YQ, YR, YS, YT, YU, YV, YW, YX, YY, YZ, ZA, ZB, ZC, ZD, ZE, ZF, ZG, ZH, ZI, ZJ, ZK, ZL, ZM, ZN, ZO, ZP, ZQ, ZR, ZS, ZT, ZU, ZV, ZW, ZX, ZY, ZZ</p>	<p>Current: 72</p> <p>Potential: 72</p>	<p>The graph shows the current energy efficiency of your home.</p> <p>The higher the rating the lower your fuel bills are likely to be.</p> <p>The potential rating shows the effect of undertaking the recommendations on page 3.</p> <p>The average energy efficiency rating for a dwelling in England and Wales is band D (rating 69).</p> <p>The EPC rating given here is based on standard assumptions about occupancy and energy use and may not reflect how energy is consumed by individual occupants.</p>
<p>Top actions you can take to save money and make your home more efficient</p>		
Recommended measures	Indicative cost	Typical savings over 3 years
1 Cavity wall insulation	£300 - £1,500	£ 150
<p>To receive advice on what measures you can take to reduce your energy bills, visit <a href="http://www.openenergycouncil.org.uk">www.openenergycouncil.org.uk</a> or call Response 0800 442222. The Green Deal may enable you to make your home warmer and cheaper to run.</p>		

**Important Notice**  
 In accordance with the Property Misdescriptions Act (1991) we have prepared these sales particulars as a general guide to give a broad description of the property. They are not intended to constitute part of an offer or contract. We have not carried out a structural survey and the services, appliances and specific fittings have not been tested. All photographs, measurements, floor plans and distances referred to are given as a guide only and should not be relied upon for the purchase of carpets or any other fixtures or fittings. Lease details, service charges and ground rent (where applicable) are given as a guide only and should be checked and confirmed by your solicitor prior to exchange of contracts.