

Green Lane, Streatham CR7

Borough: Croydon

£1,590 pcm

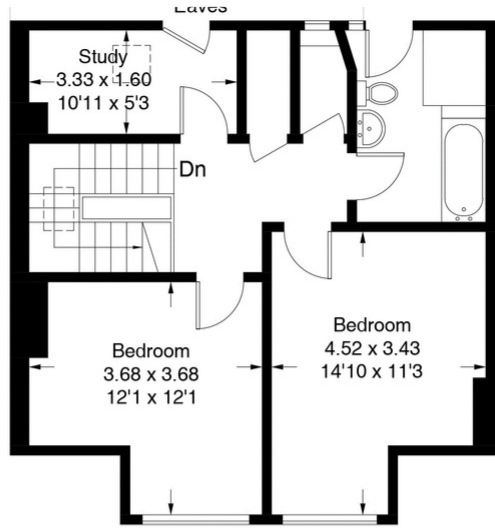
- Four double bedroom flat
- Very spacious



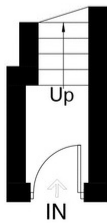
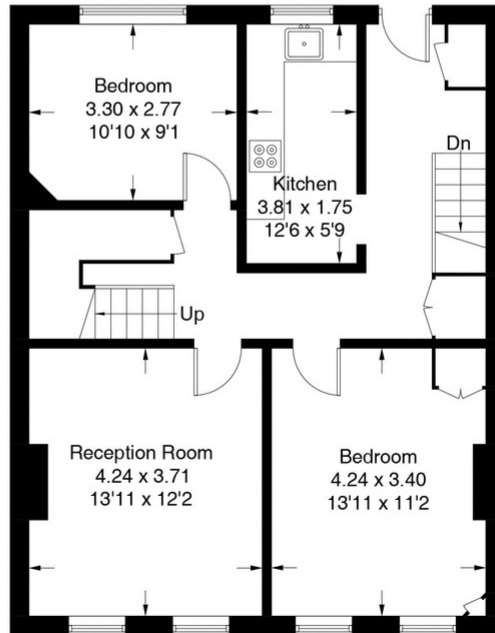
A very large four bedroom split level flat above a small parade of shops. The accommodation has recently been decorated and has a brand new kitchen and bathroom suite. The apartment benefits from a private front door and study.

Green Lane

Approximate Gross Internal Area Total = 123.3 sq m / 1327 sq ft



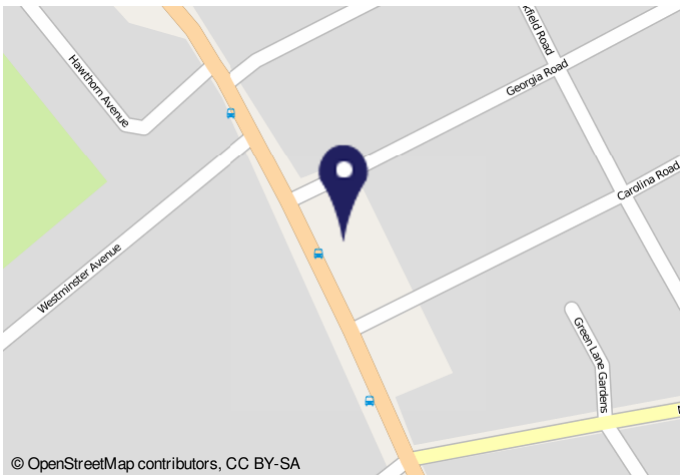
Second Floor
Sq ft 564



Ground Floor
Sq ft 28

First Floor
Sq ft 735

Illustration for identification purposes only, measurements are approximate, not to scale. FloorplansUsketch.com © 2018 (ID467437)



© OpenStreetMap contributors, CC BY-SA

Important Notice

In accordance with the Property Misdescriptions Act (1991) we have prepared these sales particulars as a general guide to give a broad description of the property. They are not intended to constitute part of an offer or contract. We have not carried out a structural survey and the services, appliances and specific fittings have not been tested. All photographs, measurements, floor plans and distances referred to are given as a guide only and should not be relied upon for the purchase of carpets or any other fixtures or fittings. Lease details, service charges and ground rent (where applicable) are given as a guide only and should be checked and confirmed by your solicitor prior to exchange of contracts.