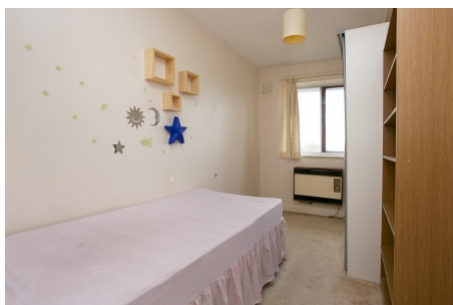


## Campbell Close , Streatham SW16

Tenure: Leasehold Borough: Lambeth

**£325,000**

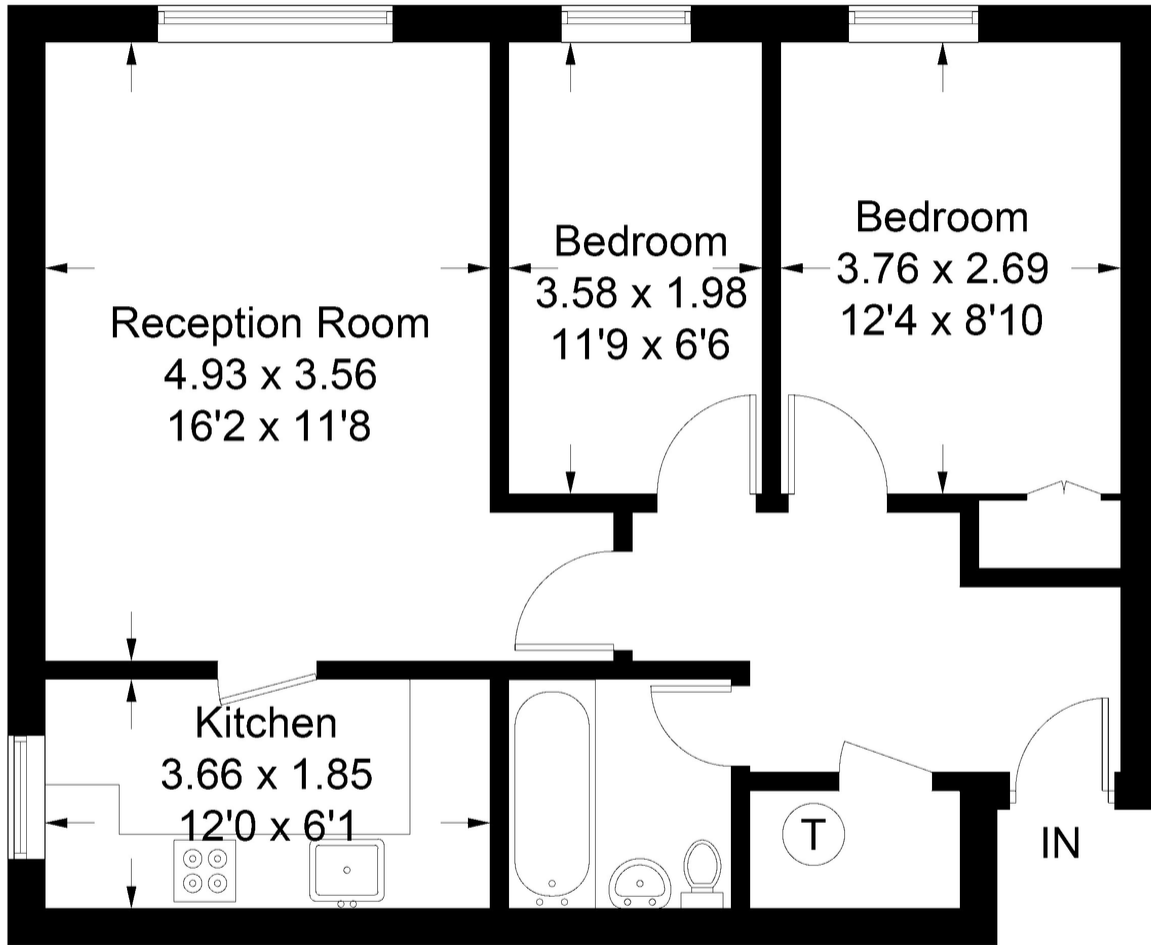
- Two bedrooms
- Smart well-kept block with parking



A purpose built two bedroom flat in a smart well-kept block with parking. The flat itself would benefit from refurbishment and modernisation. It is located within close proximity of Streatham High Road and the excellent rail links of Streatham Station. There are many bus routes stopping at Mitcham Lane and the High Road to give a choice of routes into the city and Tooting Bec Common is a short walk away. Streatham Hub Development, the Leisure Centre and large super markets are also close at hand as well as the new Marks and Spencer's Food Hall.

# Campbell Close

Approximate Gross Internal Area Total = 59.6 sq m / 641 sq ft



## Third Floor

Illustration for identification purposes only, measurements are approximate, not to scale. FloorplansUsketch.com © 2018 (ID405319)



**Important Notice**  
 In accordance with the Property Misdescriptions Act (1991) we have prepared these sales particulars as a general guide to give a broad description of the property. They are not intended to constitute part of an offer or contract. We have not carried out a structural survey and the services, appliances and specific fittings have not been tested. All photographs, measurements, floor plans and distances referred to are given as a guide only and should not be relied upon for the purchase of carpets or any other fixtures or fittings. Lease details, service charges and ground rent (where applicable) are given as a guide only and should be checked and confirmed by your solicitor prior to exchange of contracts.