

## Streatham Common North, Streatham SW16

Tenure: Share of Freehold Borough: Lambeth

**£390,000**

- Two double bedrooms
- Fantastic view over the common




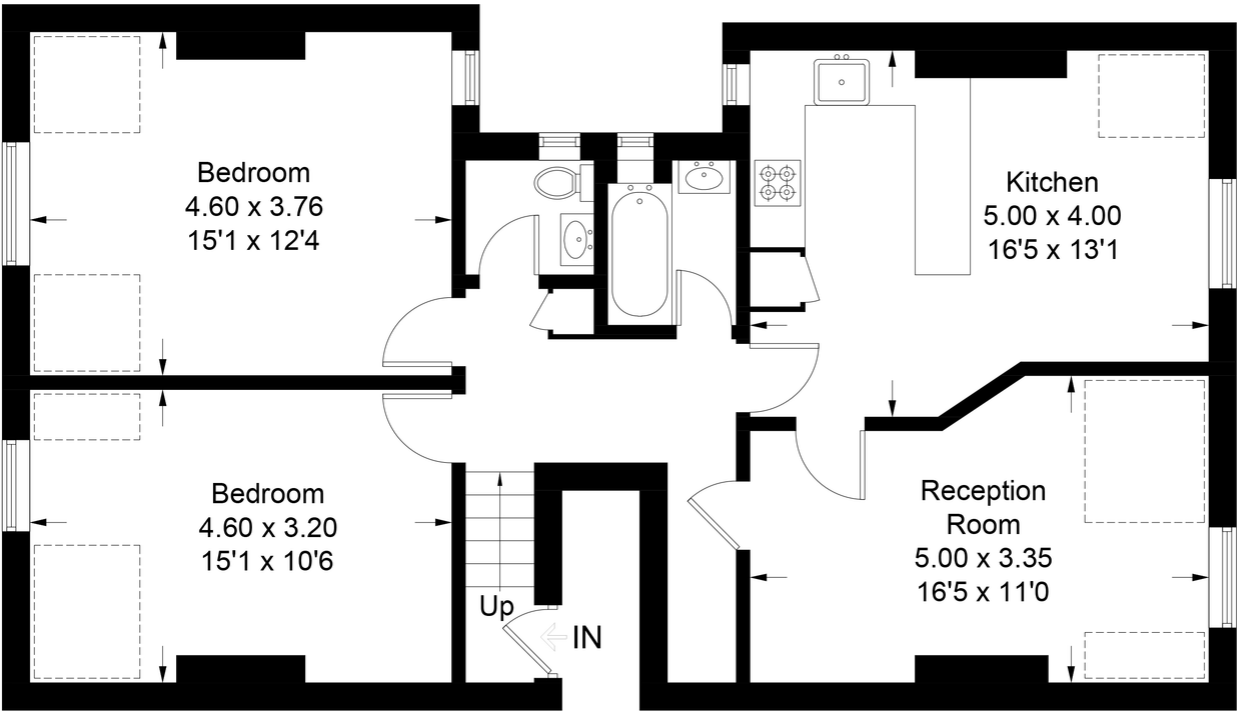
A large two double bedroom flat with a fabulous view over the common. The flat is spacious and light but would benefit from some modernisation and re decoration. It is on the top floor of a smart period house and the views across the common are fantastic. Streatham and Streatham Common stations are both close by as well as two large supermarkets, the leisure centre and of course Streatham Common.

# Streatham Common North

Approximate Gross Internal Area  
Second Floor = 73.0 sq m / 786 sq ft  
Reduced Headroom = 9.1 sq m / 98 sq ft  
Total = 82.1 sq m / 884 sq ft

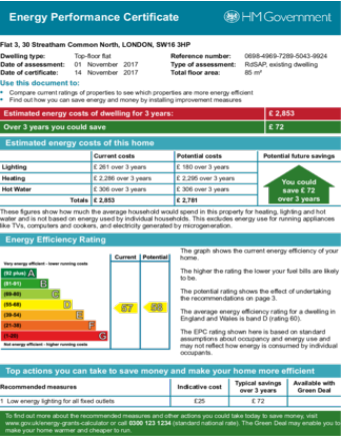
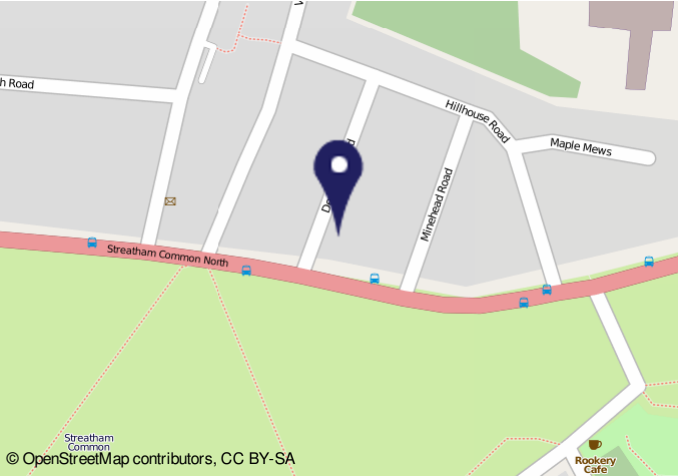


 = Reduced headroom below 1.5m / 5'0



## Second Floor

This plan is for layout guidance only. Not drawn to scale unless stated. Windows and door openings are approximate. Whilst every care is taken in the preparation of this plan, please check all dimensions, shapes and compass bearings before making any decisions reliant upon them. (ID403813)



**Important Notice**

In accordance with the Property Misdescriptions Act (1991) we have prepared these sales particulars as a general guide to give a broad description of the property. They are not intended to constitute part of an offer or contract. We have not carried out a structural survey and the services, appliances and specific fittings have not been tested. All photographs, measurements, floor plans and distances referred to are given as a guide only and should not be relied upon for the purchase of carpets or any other fixtures or fittings. Lease details, service charges and ground rent (where applicable) are given as a guide only and should be checked and confirmed by your solicitor prior to exchange of contracts.