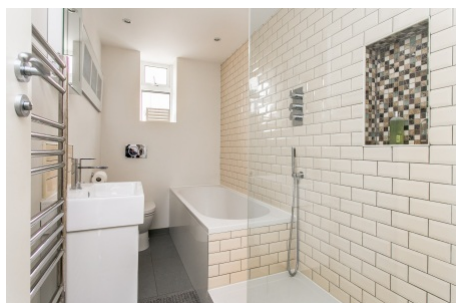


Streatleigh Court, Streatham SW16

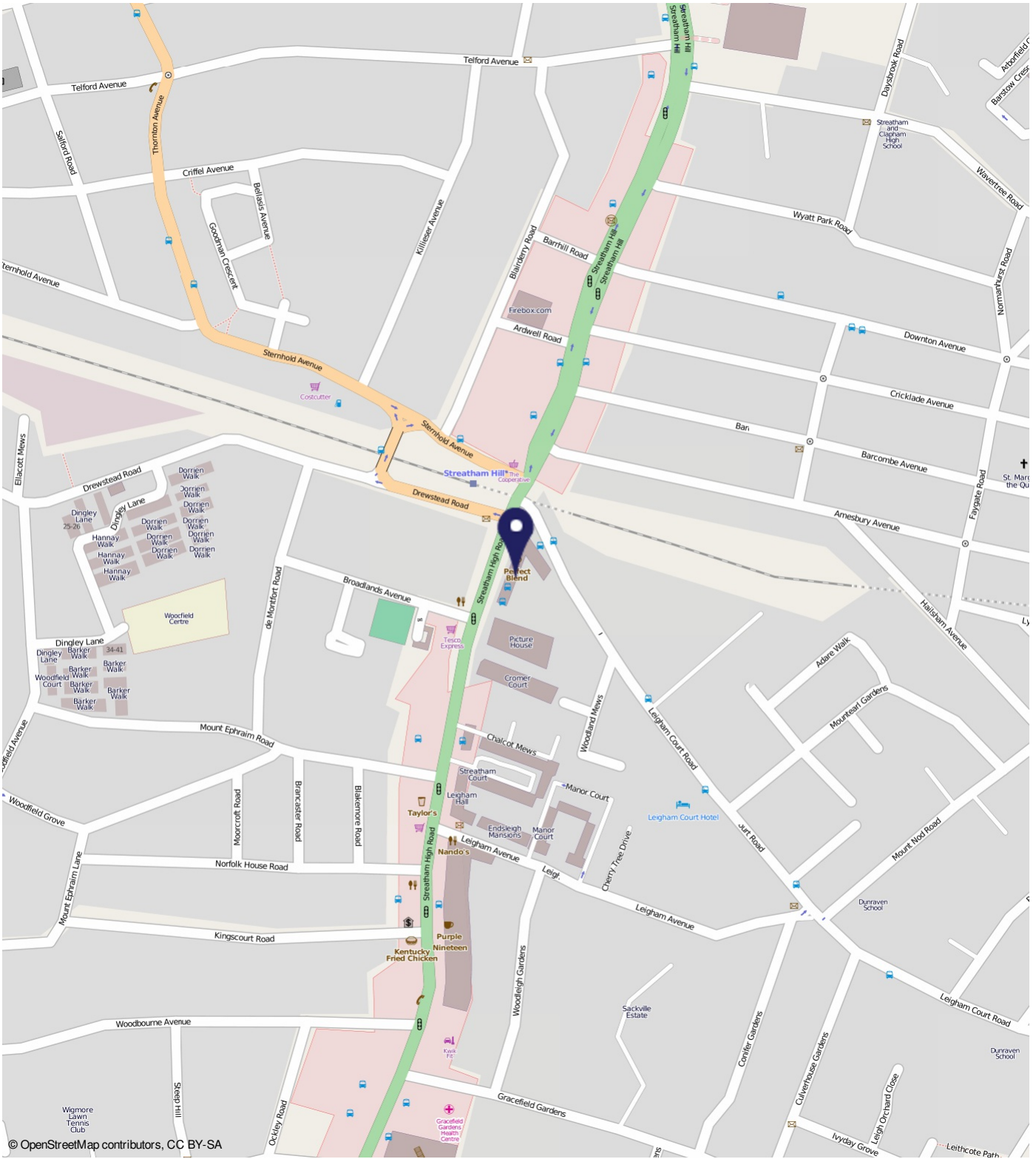
Borough: Lambeth

£1,500 pcm

- Top floor flat
- Two large double bedrooms



A beautifully presented two double bedroom, two bathroom flat located directly opposite Streatham Hill station. The flat is light and airy on the top floor and so has great views of the city center. There is a lift, built in Sonos sound system and is in excellent decorative order. Both rooms are big doubles, good storage. Available soon, furnished.



© OpenStreetMap contributors, CC BY-SA

Streatleigh Court, Streatham SW16

Distances

To Streatleigh Hill Rail Station 0.1 miles
 To Streatham Rail Station 0.8 miles

15101022, 1510 Energy performance certificate (EPC) - Floor energy certificate - 10/10/16

Energy performance certificate (EPC)	
Part B Minimum Current Standard (England) 10/10/16	Issue date: 19 October 2012 Certificate number: 912 8121 8888 8888 2276
Property type	Top-floor flat
Total floor area	73 square metres
Rules on letting this property Properties can be let if they have an energy rating from A to E. You can read guidance for landlords on the website and exemption (http://www.gov.uk/government/consultations/energy-efficiency-standards-for-landlords).	
Energy efficiency rating for this property This property's current energy rating is C. It has the potential to be C. See how to improve this property's energy performance.	
The graph shows this property's current and potential energy efficiency. Properties are given a rating from A (most efficient) to G (least efficient). Properties are also given a score. The higher the number the lower your fuel bills are likely to be. For properties in England and Wales: the average energy rating is D the average energy score is 60	

<http://www.energy-certificates.gov.uk/energy-certificates/EPC/15101022-1510>

Important Notice
 In accordance with the Property Misdescriptions Act (1991) we have prepared these sales particulars as a general guide to give a broad description of the property. They are not intended to constitute part of an offer or contract. We have not carried out a structural survey and the services, appliances and specific fittings have not been tested. All photographs, measurements, floor plans and distances referred to are given as a guide only and should not be relied upon for the purchase of carpets or any other fixtures or fittings. Lease details, service charges and ground rent (where applicable) are given as a guide only and should be checked and confirmed by your solicitor prior to exchange of contracts.